



HAL
open science

**Mono- to tetra-alkyl ether cardiolipins in a mesophilic,
sulfate-reducing bacterium identified by
UHPLC-HRMSn: a novel class of membrane lipids**

Ellen C Hopmans, Vincent Grossi, Diana X Sahonero-Canavesi, Nicole J Bale,
Cristiana Cravo-Laureau, Jaap S Sinninghe Damsté

► **To cite this version:**

Ellen C Hopmans, Vincent Grossi, Diana X Sahonero-Canavesi, Nicole J Bale, Cristiana Cravo-Laureau, et al.. Mono- to tetra-alkyl ether cardiolipins in a mesophilic, sulfate-reducing bacterium identified by UHPLC-HRMSn: a novel class of membrane lipids. *Frontiers in Microbiology*, 2024, 15, pp.1404328. 10.3389/fmicb.2024.1404328 . hal-04614235

HAL Id: hal-04614235

<https://univ-pau.hal.science/hal-04614235>

Submitted on 17 Jun 2024

HAL is a multi-disciplinary open access archive for the deposit and dissemination of scientific research documents, whether they are published or not. The documents may come from teaching and research institutions in France or abroad, or from public or private research centers.

L'archive ouverte pluridisciplinaire **HAL**, est destinée au dépôt et à la diffusion de documents scientifiques de niveau recherche, publiés ou non, émanant des établissements d'enseignement et de recherche français ou étrangers, des laboratoires publics ou privés.



OPEN ACCESS

EDITED BY

Christian Sohlenkamp,
National Autonomous University of Mexico,
Mexico

REVIEWED BY

Meriyem Aktas,
Ruhr University Bochum, Germany
Nompumelelo Philile Praiseworthy Nyembe,
University of the Western Cape, South Africa

*CORRESPONDENCE

Jaap S. Sinninghe Damsté
✉ jaap.damste@nioz.nl

PRESENT ADDRESS

Vincent Grossi,
Mediterranean Institute of Oceanography
(MIO), Aix-Marseille University, CNRS,
Marseille, France

[†]These authors have contributed equally to
this work and share first authorship

RECEIVED 20 March 2024

ACCEPTED 06 May 2024

PUBLISHED 22 May 2024

CITATION

Hopmans EC, Grossi V, Sahonero-Canavesi DX,
Bale NJ, Cravo-Laureau C and Sinninghe
Damsté JSS (2024) Mono- to tetra-alkyl ether
cardiolipins in a mesophilic, sulfate-reducing
bacterium identified by UHPLC-HRMSⁿ: a
novel class of membrane lipids.
Front. Microbiol. 15:1404328.
doi: 10.3389/fmicb.2024.1404328

COPYRIGHT

© 2024 Hopmans, Grossi,
Sahonero-Canavesi, Bale, Cravo-Laureau and
Sinninghe Damsté. This is an open-access
article distributed under the terms of the
[Creative Commons Attribution License
\(CC BY\)](https://creativecommons.org/licenses/by/4.0/). The use, distribution or reproduction
in other forums is permitted, provided the
original author(s) and the copyright owner(s)
are credited and that the original publication
in this journal is cited, in accordance with
accepted academic practice. No use,
distribution or reproduction is permitted
which does not comply with these terms.

Mono- to tetra-alkyl ether cardiolipins in a mesophilic, sulfate-reducing bacterium identified by UHPLC-HRMSⁿ: a novel class of membrane lipids

Ellen C. Hopmans^{1†}, Vincent Grossi^{2†‡},
Diana X. Sahonero-Canavesi¹, Nicole J. Bale¹,
Cristiana Cravo-Laureau³ and Jaap S. Sinninghe Damsté^{1,4*}

¹Department of Marine Microbiology and Biogeochemistry, NIOZ Netherlands Institute for Sea Research, Den Burg, Netherlands, ²Laboratoire de Géologie de Lyon: Terre, Planètes, Environnement (LGL-TPE, UMR CNRS 5276), Univ Lyon, UCBL, Villeurbanne, France, ³Université de Pau et des Pays de l'Adour, E2S UPPA, CNRS, IPREM, Pau, France, ⁴Department of Earth Sciences, Faculty of Geosciences, Utrecht University, Utrecht, Netherlands

The composition of membrane lipids varies in a number of ways as adjustment to growth conditions. Variations in head group composition and carbon skeleton and degree of unsaturation of glycerol-bound acyl or alkyl chains results in a high structural complexity of the lipidome of bacterial cells. We studied the lipidome of the mesophilic, sulfate-reducing bacterium, *Desulfatibacillum alkenivorans* strain PF2803^T by ultra-high-pressure liquid chromatography coupled with high-resolution tandem mass spectrometry (UHPLC-HRMSⁿ). This anaerobic bacterium has been previously shown to produce high amounts of mono- and di-alkyl glycerol ethers as core membrane lipids. Our analyses revealed that these core lipids occur with phosphatidylethanolamine (PE) and phosphatidylglycerol (PG) head groups, representing each approximately one third of the phospholipids. The third class was a novel group of phospholipids, i.e., cardiolipins (CDLs) containing one (monoether/triester) to four (tetraether) ether-linked saturated straight-chain or methyl-branched alkyl chains. Tetraether CDLs have been shown to occur in archaea (with isoprenoid alkyl chains) but have not been previously reported in the bacterial Domain. Structurally related CDLs with one or two alkyl/acyl chains missing, so-called monolyso- and dilyso-CDLs, were also observed. The potential biosynthetic pathway of these novel CDLs was investigated by examining the genome of *D. alkenivorans*. Three CDL synthases were identified; one catalyzes the condensation of two PGs, the other two are probably involved in the condensation of a PE with a PG. A heterologous gene expression experiment showed the *in vivo* production of dialkylglycerols upon anaerobic expression of the glycerol ester reductase enzyme of *D. alkenivorans* in *E. coli*. Reduction of the ester bonds probably occurs first at the *sn*-1 and subsequently at the *sn*-2 position after the formation of PEs and PGs.

KEYWORDS

ether-linked phospholipids, cardiolipin, sulfate-reducing bacteria, liquid chromatography/high-resolution mass spectrometry, cardiolipin synthase genes, tetraethers, enzymatic ester bond reduction

Introduction

Bacterial and eukaryotic cellular membranes are composed of a lipid bilayer made of intact polar lipids, commonly diacylglycerols with a polar head group such as phosphatidylglycerol (PG), phosphatidylserine (PS) or phosphatidylethanolamine (PE). Cardiolipins (CDLs), formally 1,3-bis (sn-3'-phosphatidyl)-sn-glycerols also called bisphosphatidylglycerols, are a particular class of phospholipids with a somewhat unusual structure. They can be considered as dimeric phospholipids in which two 1,2-diacyl-sn-glycerol-3-phosphoryl moieties are bound through a third glycerol moiety (see Figure 1 for structures), resulting in phospholipids with four instead of two acyl chains with varying chain length and degree of unsaturation, resulting in complex mixtures (Oemer et al., 2018). CDLs are known to be involved in the structural organization of membranes, protein interactions, enzyme functioning, and osmoregulation (Schlame, 2008). Their biosynthesis in bacteria is encoded by cardiolipin synthases (CLs), enzymes belonging to the phospholipase D (PLD) superfamily or to the CDP-alcohol phosphotransferase superfamily (Sandoval-Calderon et al., 2009). CDLs occur widely in membranes of eukaryotes and bacteria but have also been reported in halo(alkali)philic and methane-metabolizing archaea, where they occur as unusual CDLs with four ether-bound isoprenoidal alkyl chains (i.e., so-called tetraethers) instead of the common esterified acyl chains found in bacterial and eukaryotic phospholipids (Lattanzio et al., 2002; Corcelli, 2009; Angelini et al., 2012; Yoshinaga et al., 2012; Bale et al., 2019). CDLs with core lipids containing plasmalogens, i.e., 1-O-alk-1'-enyl, 2-acyl glycerolipids,

have been reported in anaerobic bacteria and myxobacteria (see Goldfine, 2017 for a review) but these CDLs contain two ester bonds and, in addition, two vinyl ether moieties.

Although saturated ether lipids are typically considered to be of unique archaeal origin, some mesophilic and thermophilic bacteria have the capacity to biosynthesize monoalkyl/monoacyl- and dialkyl-glycerol ether lipids (e.g., Langworthy et al., 1983; Huber et al., 1996; Sinninghe Damsté et al., 2007, 2014, 2023; Sturt et al., 2004; Ring et al., 2006; Grossi et al., 2015; Vinçon-Laugier et al., 2016). Such non-isoprenoid alkylglycerols are increasingly being recognized in bacterial isolates and are widespread in the environment (see Grossi et al., 2015 for review). The biosynthesis of alkylglycerols in bacteria has been described to be catalyzed either by the ether lipid biosynthesis enzyme (ElbD; Lorenzen et al., 2014) or by a glycerol ester reductase (Ger; Sahonero-Canavesi et al., 2022). Heterologous gene expression experiments showed the *in vivo* production of different monoalkylglycerols upon anaerobic expression in *E. coli* of the Ger enzyme of the alkylglycerol-producing bacteria *Desulfatibacillum alkenivorans* and *Thermotoga maritima*. It was demonstrated that Ger converts an sn-1 ester bond into an sn-1 ether bond and that the ether-bound alkyl chains are based on the major fatty acid components of the expression host (Sahonero-Canavesi et al., 2022). However, while these findings could explain the occurrence of sn-1-alkyl ether bonds in a wide variety of bacteria, they did not provide evidence for the biosynthesis of glycerol diethers, such as those observed in *D. alkenivorans* (Grossi et al., 2015), suggesting that a second enzyme would be responsible for the formation of the alkyl ether bonds at the sn-2 position of the glycerol moiety.

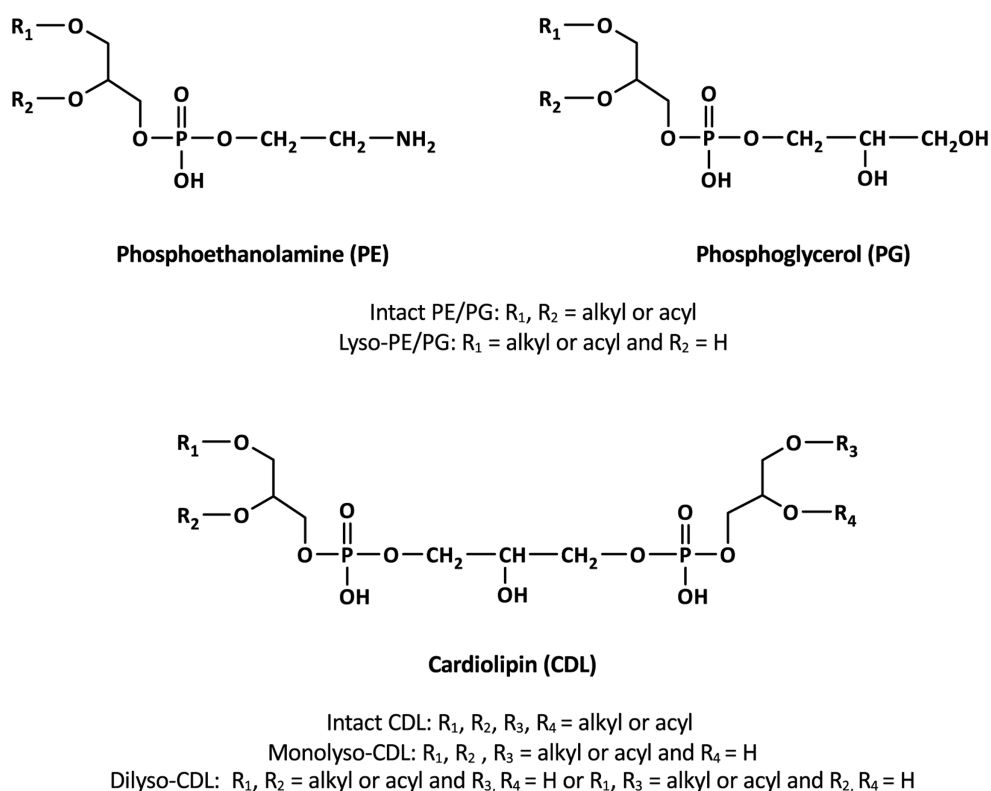


FIGURE 1
General structures of membrane phospholipids discussed in the text.

Here, we report the composition of the lipidome of the mesophilic sulfate-reducing bacterium, *D. alkenivorans* strain PF2803^T. Previous analysis of the membrane core lipids (obtained after hydrolysis of the phospholipids) of this mesophilic sulfate-reducing bacterium and a phylogenetically closely related species (*D. aliphaticivorans* strain CV2803^T) showed that their membrane lipids deviate from those of most other mesophilic bacteria because they contain high amounts of mono- and di-alkyl glycerol ethers (Grossi et al., 2015; Vinçon-Laugier et al., 2016, 2017). However, their phospholipid composition remained unknown. We applied UHPLC-HRMSⁿ to characterize the lipidome of *D. alkenivorans* strain PF2803^T in detail and came across a previously uncharacterized class of bacterial phospholipids, i.e., CDLs containing one (monoether/triester) to four (tetraether) ether-linked saturated alkyl chains, resulting in an even more complex distribution of bacterial CDLs than previously reported (Oemer et al., 2018). Corresponding CDLs with one or two alkyl/acyl chains missing, so-called monolyso- and dilyso-CDLs, were also observed. The potential biosynthetic pathway of these novel CDLs was investigated by examining the genes encoding the proteins potentially involved.

Materials and methods

Bacterial cultivation

The mesophilic sulfate-reducing bacterium *D. alkenivorans* strain PF2803^T was previously isolated from oil-polluted marine sediment as described by Cravo-Laureau et al. (2004). The strain belongs to the family *Desulfatibacillaceae* of the Thermodesulfobacteriota (Waite et al., 2020), formerly classified as a deltaproteobacterium. *D. alkenivorans* is a hydrocarbonoclastic bacterium capable of utilizing *n*-alk-1-enes in addition to more classical carbon substrates (Cravo-Laureau et al., 2004; Grossi et al., 2015; Vinçon-Laugier et al., 2016). Strain PF2803^T was grown under optimal growth conditions (30°C, pH 6.8, [NaCl] 10 g/L) in 100 mL of defined anoxic sulfate-reducing medium with *n*-hexadec-1-ene as the sole carbon and energy source. At the end of the exponential-growth phase, cells were harvested by filtration on 0.1 µm glass microfiber filters (GF/B pore size; Whatman) and kept frozen before lipid analysis.

Extraction and HPLC-HRMSⁿ analysis of phospholipids

Filtered cells were extracted using a modified Bligh and Dyer method using a mixture of methanol/dichloromethane/phosphate buffer (2:1:0.8, v/v/v), and lipid extracts were then analyzed using a normal phase UHPLC-ESI/HRMSⁿ orbitrap method, as described in Bale et al. (2019). Phospholipid identification was based on exact mass (mass tolerance 3 ppm) and interpretation of MS² fragmentation spectra. Relative abundances of phospholipids were determined by peak integration of mass chromatograms of the [M+H]⁺, [M+H-H₂O]⁺, [M+NH₄]⁺, [M+Na]⁺ ions as appropriate, and of the ¹³C isotope peak for the [M+H]⁺ ions in the case of the CDLs. It is important to note that different phospholipid classes exert a different MS response, and the MS response can even differ within a phospholipid class depending on the chemical structure of the core lipid (chain length, methyl branching, ether vs. ester bond). Due to the analytical method used, the relative abundance of PGs and CDLs are

likely underestimated due to their relatively poor ionization and loss of the molecular signal due to in-source fragmentations. The phospholipid distributions obtained do not take these differences into account and are based on the relative abundance of the lipids as measured.

Genomic methods and phylogenetic tree construction

The genes encoding for the proteins involved in ether formation and cardiolipin biosynthesis were obtained from the UniProt database (The UniProt Consortium, 2023) or identified by protein Blast Searches (pBLAST). For the ether biosynthetic genes, a protein homolog of the confirmed Ger enzyme of the diether-producing *D. alkenivorans* (SHJ90043.1) was used as query. Similarly, the Cls proteins for the cardiolipin biosynthesis were identified with pBLAST using the ClsA/ClkB/ClxC (P0A6H8/P0AA84/P75919) from *E. coli* as query. For the multiple sequence amino acid analysis, the sequences were retrieved from the literature or the Uniprot database (The UniProt Consortium, 2023). For phylogenetic tree construction, the amino acid sequences of all the characterized bacterial, archaeal and the proposed eukaryotic proteins were aligned with MAFFT, with a gap extension penalty of 0.123 and a gap open penalty of 1.53. This alignment was used as input for constructing the Cls phylogenetic tree, using the PhyML in the online platform NGPhylogeny.fr (Lemoine et al., 2019). Statistical support was analyzed with transfer bootstrap expectation (TBE). The phylogenetic tree was visualized with iTOL (Letunic and Bork, 2021).

To examine the enzymatic activity of the additional glycerol ester reductase enzymes, the gene coding for a Ger homolog (Ger2; SHK01260.1) was commercially synthesized (Eurofins, Germany), sub-cloned in pCDFDuet-1 and expressed in *E. coli* strain BL21 DE3 aerobically and anaerobically, using the methods described in Sahonero-Canavesi et al. (2022). In brief, liquid cultures of exponentially growing *E. coli* BL21 DE3 harboring an empty pET29b, pET29b.Ger, pCDFDuet-1.Ger2 or pET29b.Ger + pCDFDuet-1.Ger2 from *D. alkenivorans* were grown in 2× YT media (Sigma-Aldrich) at 37°C, induced with 0.2 mM IPTG when cultures reached an OD 600 of 0.3, and incubated at 25°C for 16 h both anaerobically and aerobically. The expression of the proteins was verified using 7.5% Mini-PROTEAN TGX Precast Gels (Bio-Rad), stained with Colloidal Blue staining (Invitrogen).

Results

Dialkyl, monoalkyl/monoacyl, and diacyl composition of phospholipids

Figure 2 shows a partial base peak chromatogram (BPC) of the Bligh-Dyer extract of *D. alkenivorans* containing the phospholipids. The BPC is dominated by overlapping distributions of phospholipids with phosphoethanolamine (PE) and phosphoglycerol (PG) head groups and dialkylglycerol (DEG), monoalkyl/monoacylglycerol (AEG) and diacylglycerol (DAG) core lipids. PGs were detected in slightly higher proportions than PEs (Figure 3A). Dialkylglycerides with a PE or PG head group (DEG-PG and-PE) eluted between 19 and 21 min, alkyl/acylglycerides with a PE or PG head group (AEG-PG and-PE) eluted between 19.5 and 21.5 min, and diacylglycerides with

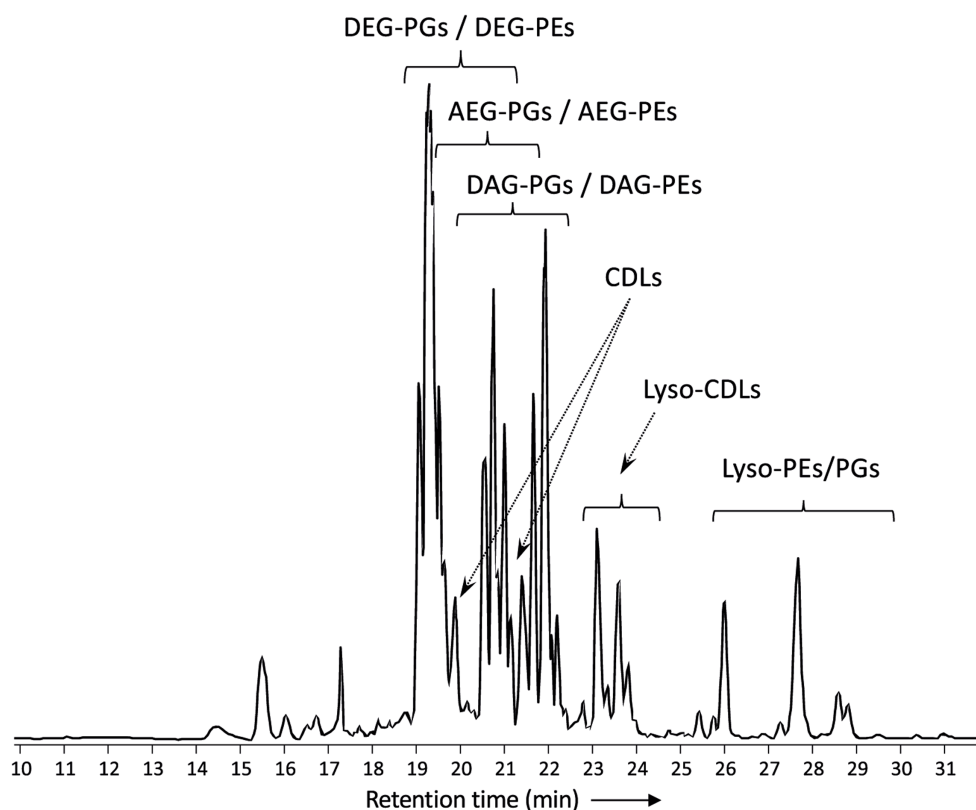


FIGURE 2

Partial base peak chromatogram (m/z 375-2000) of the total lipid extract of *D. alkenivorans* strain PF2803^T grown on C_{16} *n*-alk-1-ene. Indicated are clusters of overlapping phospholipids (DEG, dialkylglyceride; AEG, monoalkyl/monoacylglyceride; DAG, diacylglyceride; PG, phosphoglycerol; PE, phosphoetanolamine) and high molecular weight compounds identified as alkyl ether cardiolipins (CDLs). Lyso-PEs/PGs = mixture of mono-alkylglyceride (MEG) and monoacylglyceride (MAG) PEs/PGs. Lyso-CDLs = mixture of mono- and dilyso-cardiolipins.

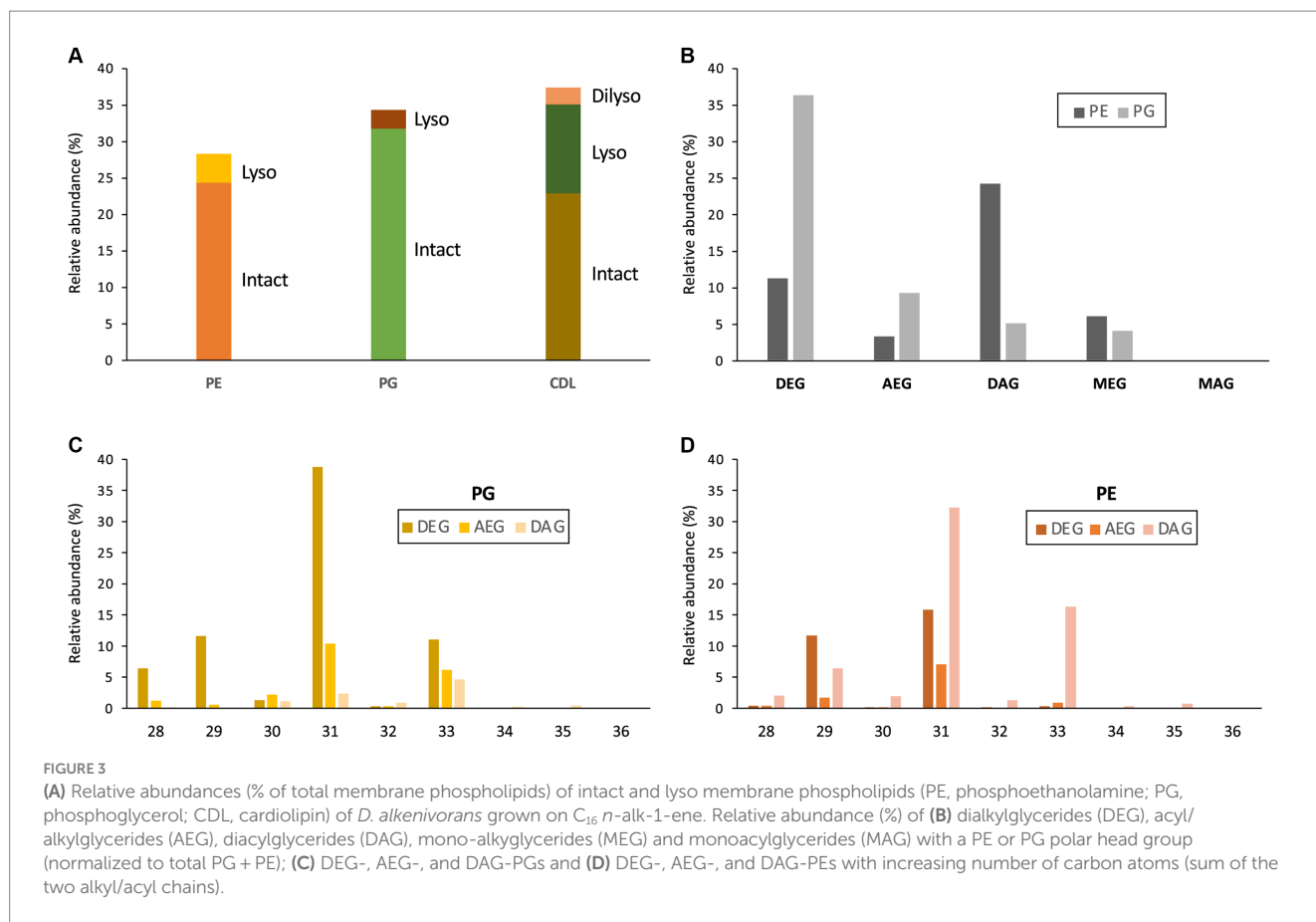
PE- and PG head group (DAG-PG and -PE) eluted between 20 and 22.5 min. In addition, monoalkyl- and monoacyl-glycerides (MEG and MAG, respectively) with a PE or PG head group were detected. These lyso-lipids elute later, between 26 and 30 min.

The distribution of the PEs and PGs with various cores (DEG, AEG, DAG, MEG, and MAG) was determined by peak integration of specific mass chromatograms (see experimental) (Figure 3B). Within PGs, core lipids with at least one ether-bound alkyl chain dominated, with DEG core lipids contributing 66.2%, AEG core lipids 17.0%, and MEG core lipids 7.4% of total PGs. Only 9.3% of the PGs contained a DAG core lipid and MAG-PGs were not detected. Ether lipids were less represented in PEs, which were dominated by DAGs (54.0% of total PGs). DEGs, MEGs and AEGs contributed only 25.0, 13.5 and 7.5% of total PEs, respectively. Only traces of MAG-PEs (0.2%) were detected. Similarities can be observed between the distribution of the total number of alkyl/acyl carbon atoms within the PE and PG phospholipids (Figures 3C,D). For both PGs and PEs this number is predominantly 31, followed by 33 and 29. The two most dominant phospholipids were a C_{31} DEG-PG (representing 39% of total PGs and 22% of summed PGs and PEs) and a C_{31} DAG-PE (representing 32% of total PEs and 14% of summed PGs and PEs). Fragmentations observed in the MS² spectra of the various PGs and PEs revealed that their core lipids were composed of C_{14} to C_{17} alkyl and acyl chains, in good agreement with the range of total number of alkyl/acyl carbon atoms (28–36).

These findings are in accordance with the previously reported core lipid composition observed after cell hydrolysis of *D. alkenivorans* grown on *n*-hexadec-1-ene (Grossi et al., 2015). This study indicated that the major membrane lipids were composed of n - C_{14} , n - C_{16} and 10-Me- C_{16} fatty acids, *sn*-1-*O*-10-Me- C_{16} and *sn*-1-*O*- n - C_{16} (and to a lesser extent *sn*-1-*O*- C_{14} , *sn*-2-*O*- C_{14} and *sn*-1-*O*-10-Me- C_{14}) glycerol monoethers, and a *sn*-1-*O*-10-Me- C_{16} -*sn*-2-*O*- C_{14} glycerol diether (accompanied by smaller amounts of *sn*-1-*O*- C_{16} -*sn*-2-*O*- C_{14} , *sn*-1-*O*- C_{14} -*sn*-2-*O*- C_{14} , *sn*-1-*O*-10-Me- C_{14} -*sn*-2-*O*- C_{16} , *sn*-1-*O*-10-Me- C_{16} -*sn*-2-*O*- C_{16} homologs). Our UHPLC-ESI/HRMSⁿ method does not allow to identify the degree and position of branching of the alkyl/acyl chains. However, based on the core lipid composition of the strain grown under similar conditions (Grossi et al., 2015), it is likely that (i) the alkyl/acyl moieties with 14 and 16 carbon atoms identified in the PE and PG phospholipids are n - C_{14} and n - C_{16} carbon chains, respectively, (ii) those with 15 and 17 carbon atoms identified in the PE and PG phospholipids are 10-Me- C_{14} and 10-Me- C_{16} , respectively and, (iii) these branched alkyl/acyl moieties are only located at the *sn*-1 position of the glycerol moiety of the phospholipids and not at the *sn*-2 position.

Identification and distribution of alkyl ether cardiolipins

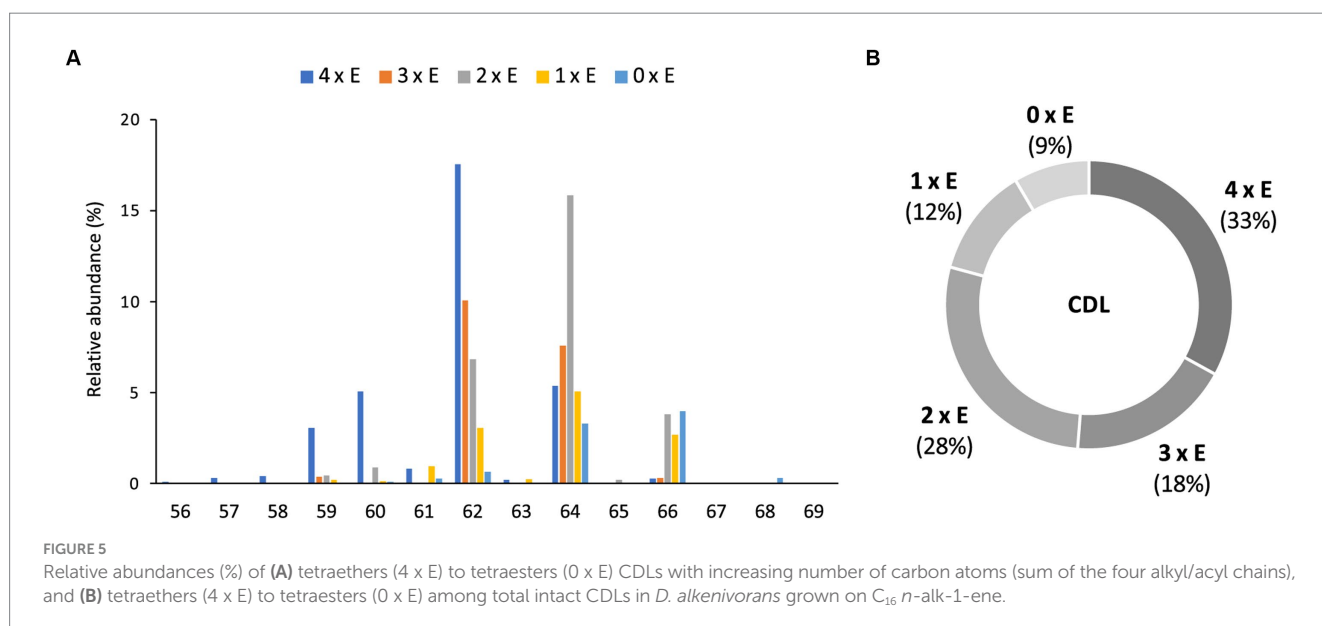
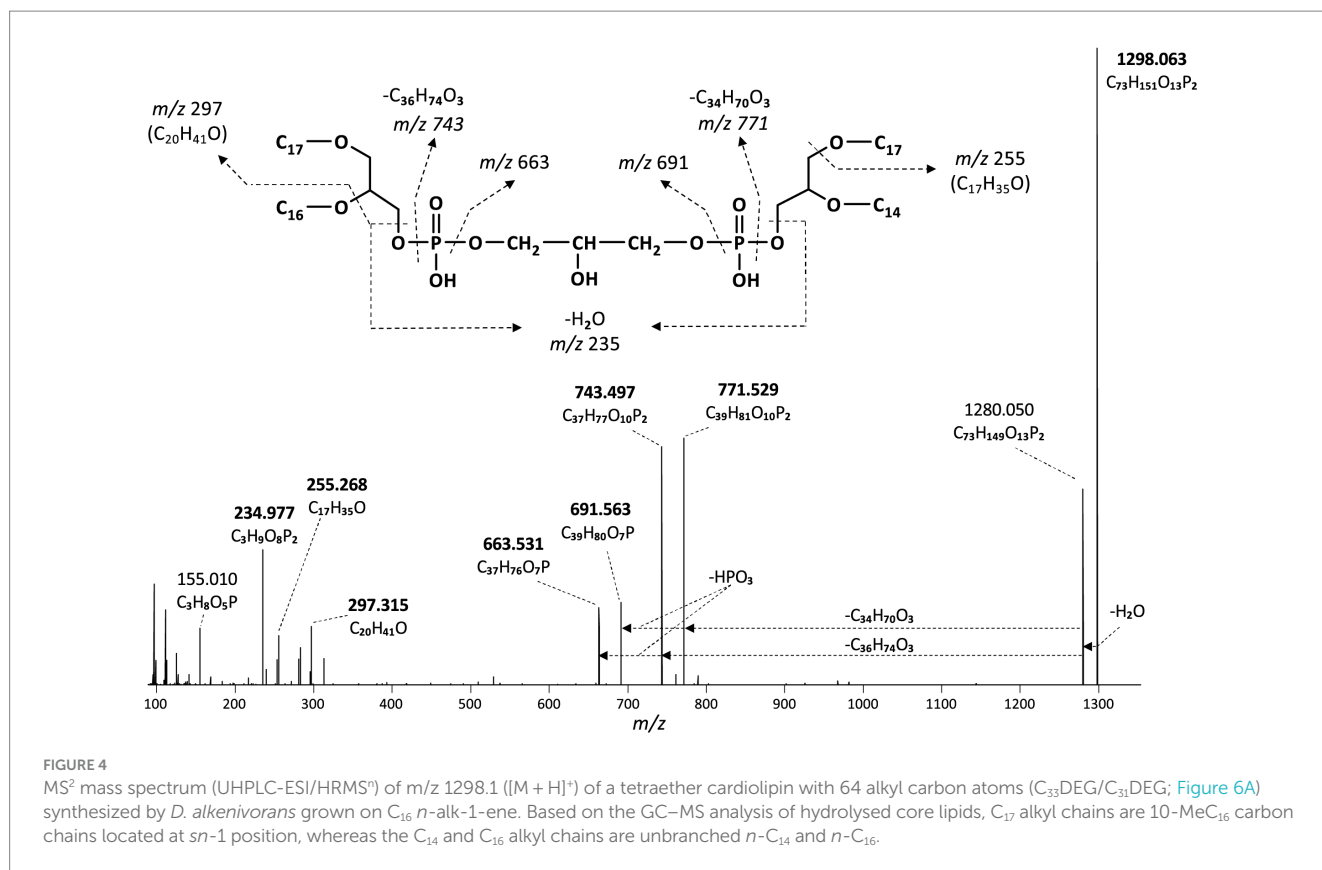
In addition to the dialkyl, monoalkyl/monoacyl, and diacyl PE- and PG-phospholipids, we observed series of high molecular weight (MW)



phospholipids. Figure 4 shows a typical fragmentation (MS²) spectrum of one of these high MW phospholipids eluting at 19.75 min in the BPC (Figure 2), which exhibits a parent ion of m/z 1298.063 (exact formula C₇₃H₁₅₁O₁₃P₂, Δ ppm -1.6). After an initial loss of H₂O to produce the fragment ion at m/z 1280.050, two separate losses of 526.533 Da (C₃₄H₇₀O₃, Δ ppm 1.6) and 554.566 Da (C₃₆H₇₄O₃, Δ ppm 3.4) were observed to produce fragments at m/z 771.529 (C₃₉H₈₁O₁₀P₂, Δ ppm -1.6) and m/z 743.497 (C₃₇H₇₇O₁₀P₂, Δ ppm 1.6), respectively. A further loss of 79.967 Da (HPO₃, Δ ppm 2.6) from each of these two fragments produces fragment ions at m/z 691.563 (C₃₉H₈₀O₇P) and 663.531 (C₃₇H₇₆O₇P), respectively. In the lower mass range of the spectrum, a series of fragments at m/z 255.268 (C₁₇H₃₅O, Δ ppm -3.5), m/z 283.299 (C₁₉H₃₉O, Δ ppm -3.1), and m/z 297.315 (C₂₀H₄₁O, Δ ppm -2.8) are observed that appear to be related to the alkyl chains of the phospholipid. Two P-containing fragments at m/z 155.010 (C₃H₈O₅P, Δ ppm -3.1) and 234.977 (C₃H₉O₈P₂, Δ ppm -2.1) likely originate from the head group. Based on this fragmentation pattern, we identify this lipid as a CDL with two different DEG core lipids. The initial loss of H₂O likely originates from the free hydroxyl of the central, third glycerol moiety of the CDL. The two subsequent losses of 526 and 554 Da represent the loss of a DEG core lipid with 31 and 33 carbon atoms (sum of the two alkyl chains without the glycerol group), respectively. A further loss of a phosphatidic acid from these two fragment ions results in the fragment ions at m/z 691.563 and 663.531, representing the remaining DEG with a PG moiety. The two phosphor-containing fragments at m/z 234.977 and 155.010 represent (part of) the central characteristic phosphatidyl-glycero-phosphatidyl (PGP) moiety of CDLs. The fragments at m/z 255.268, 283.299 and 297.315

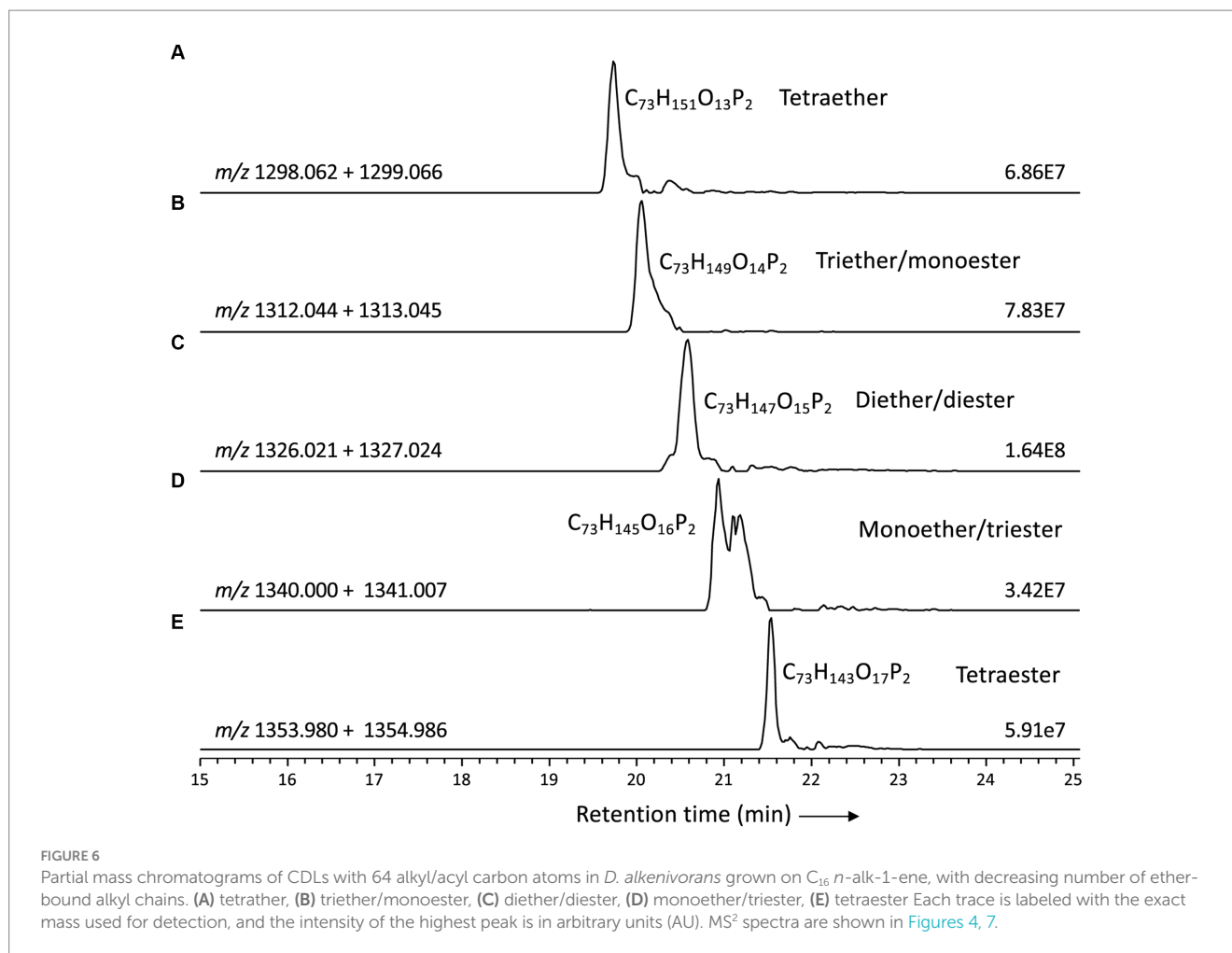
are interpreted to correspond to the different glycerol-bound alkyl moieties contained in the two DEG core lipids. Based on the core lipid composition described above and in a previous study (Grossi et al., 2015), we surmise that the DEG with 31 non-glycerol carbon atoms is composed of a glycerol with ether-bound *n*-C₁₄ and 10-Me-C₁₆ alkyl moieties at the *sn*-2 and *sn*-1 positions, respectively. The other DEG moiety with 33 non-glycerol carbon atoms consists of a glycerol with ether bound *n*-C₁₆ (*sn*-2) and 10-Me-C₁₆ (*sn*-1) alkyl moieties. Together they form a tetraether CDL with 64 alkyl carbon atoms. To the best of our knowledge, this is the first description of a bacterial tetraether CDL with four non-isoprenoidal aliphatic alkyl moieties. Based on this structural elucidation, we further identified a range of tetraether CDLs with the number of alkyl carbon atoms ranging from 56 to 66, dominated by 62, and, to a lesser extent, 64, 60, and 59 (Figure 5A).

Based on the distribution of core lipids in the PE and PG phospholipids (see previous section), we also searched for additional CDLs containing combinations of DEG, AEG, and DAG cores. A full range of CDLs with 56–68 alkyl/acyl carbon atoms in their core lipids and with a number of ether-bound alkyl chains ranging from 0 to 4 (i.e., from tetraesters to tetraethers) was observed in varying relative abundances (Figure 5). Tetraether (33%) and diether/diester (28%) CDLs were most abundant followed by triether/monoester (18%) and monoether/triester (12%), while tetraesters represented only 9% of the total CDLs (Figure 5B). This overall CDL composition of *D. alkenivorans* appears in good agreement with the DEG/AEG/DAG composition observed in PEs and PGs (Figure 3B) and with the DEG/MEG composition of hydrolysed cells of *D. alkenivorans* (Grossi et al., 2015). The high compositional complexity in the distribution of CDLs



is exemplified by the extracted ion chromatograms of CDLs with 64 alkyl/acyl carbon atoms in their two cores and a decreasing number of ether bonds (Figure 6). An increase in the number of ether alkyl chains in a CDL results in a reduced retention time. The identification of these mixed ether/ester CDLs is supported by their elemental composition, showing one additional oxygen atom for each following member of the series (Figure 6), and by their mass spectral fragmentation patterns (Figure 7). Unlike the MS² spectrum of the tetraether CDL (Figure 4),

the spectra of CDLs containing one or more acyl groups [i.e., triether/monoester (Figure 7A), diether/diester (Figure 7B), monoether/triester (Figure 7C) and tetraester (Figure 7D)] are characterized by a limited number of fragment ions representing the AEG or DAG core(s). Fragments related to DEG core lipids were low in abundance or not observed. The total number of alkyl/acyl carbon atoms of these moieties were deduced from a neutral loss from the parent ion and from the elemental composition of the compound.



In most classes of CDLs, components with 62 or 64 alkyl/acyl carbon atoms were the most abundant (Figure 5A), except for the tetraester CDLs, where the member with 66 acyl carbon atoms was most dominant. Overall, the tetraether with 62 alkyl/acyl carbon atoms (18%) and the diether/diester with 64 alkyl/acyl carbon atoms (16%) were the two most dominant compounds among total CDLs, followed by the triether/monoester with 62 or 64 alkyl/acyl carbon atoms.

Identification and distribution of lyso-cardiolipins

In addition to the above described tetraether CDLs, we detected several series of ether alkyl CDLs lacking one or two acyl chains, i.e., so-called monolyso- and dilyso-ether alkyl CDLs, respectively (Figure 1). Trilyso-CDLs were not detected. Figure 8 shows diagnostic MS² spectra of a triether monolyso-CDL and of a diether dilyso-CDL with a total number of alkyl carbon atoms of 45 and 31, respectively. As for the tetraether CDLs, their mass spectra show specific fragmentations corresponding to the loss of one of the two alkylglycerol cores. The intensity of these specific fragment ions and of the parent ion decreases, however, as the number of ether-linked alkyl chains decreases (Figures 4, 8).

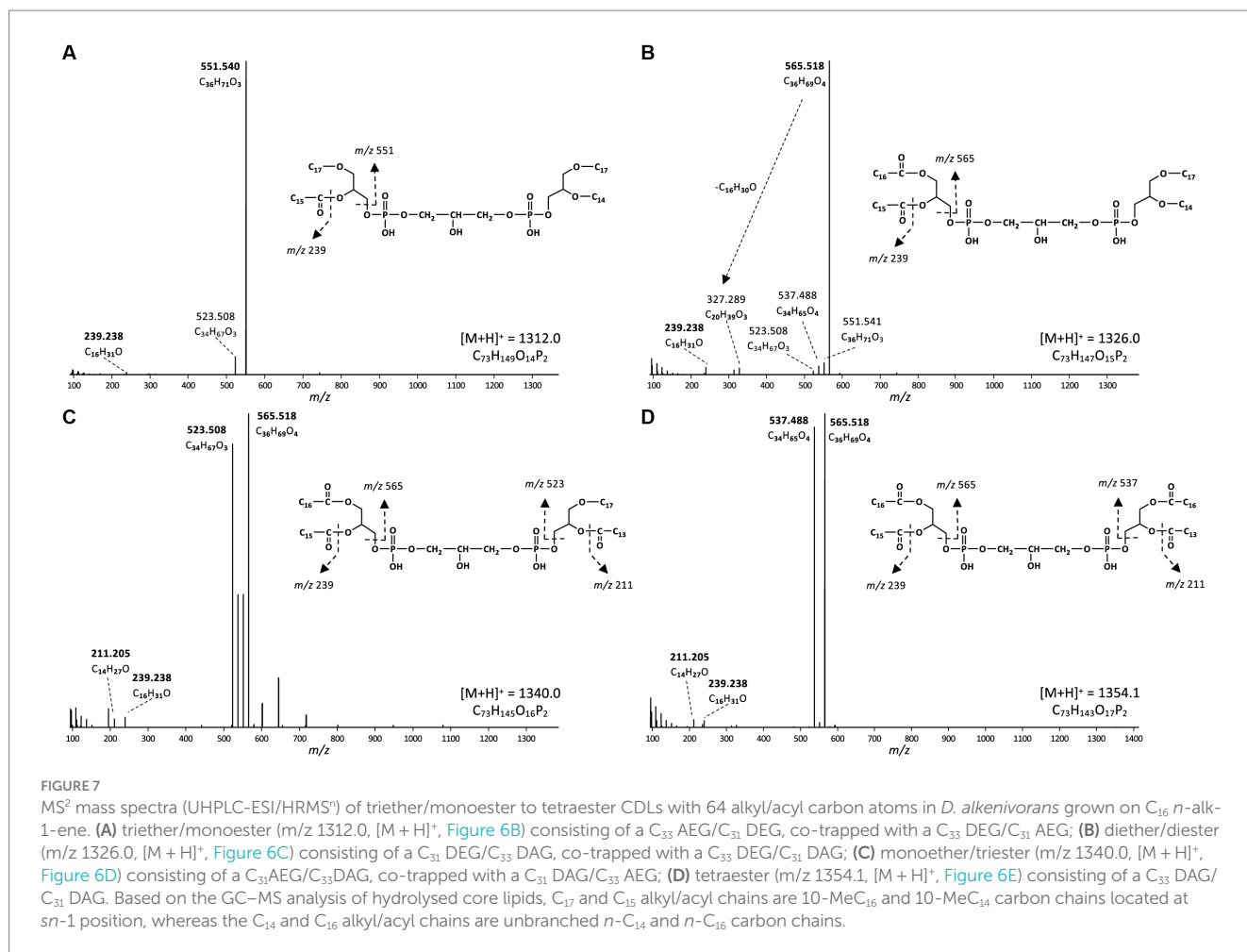
Like intact CDLs, lyso-CDLs also occurred as series of mixed ether/ester compounds, ranging from triethers to triesters and from diethers

to diesters for monolyso- and dilyso-CDLs, respectively (Figure 9; Supplementary Figure S1). As for intact CDLs, an increasing number of ether alkyl chains in the lyso-CDLs results in a decreased retention time. Dilyso-CDLs were observed in two structural variations: either two monolyso core lipids (i.e., MEG/MEG or MEG/MAG) connected by a PGP moiety, or an intact core lipid (with two alkyl/acyl chains) linked to a PGP head group (Figure 9). Mono-lyso CDLs ranged from C₄₂ to C₅₂ (sum of the three alkyl/acyl chains) and were dominated by a C₄₇ monoether/diester and C₄₅ and C₄₈ triethers (Figure 10A), whereas di-lyso CDLs ranged from C₂₈ to C₃₅ (sum of the two alkyl/acyl chains) and were dominated by a C₃₁ diether (Figure 10B).

Monolyso-CDLs (ca. 12% in total, Figure 3A) were much more abundant than dilyso-CDLs (2%) but were present in lower abundance compared to intact membrane lipids represented by CDLs (23%), PGs (32%) and PEs (24%). However, lyso-components form a much larger fraction of the total CDLs than in the case of the PEs and PGs (i.e., 38% vs. 14 and 9%, respectively).

Potential enzymes involved in the biosynthesis of tetraester/tetraether CDLs

Potential enzymes involved in the synthesis of CDLs in *D. alkenivorans* were identified by homology search (pBLAST) using the protein sequences of the three CDL synthases ClsA, ClsB, and ClsC of



E. coli (Tan et al., 2012) as queries. This search resulted in three hits, i.e., with the proteins SHL34086, SHI83627 and SHL08500 (Supplementary Tables S1, S2), which were also found to be annotated as CDL synthases in the Uniprot database (The UniProt Consortium, 2023) and also classified as members of the PLD superfamily of proteins. Indeed, Cls1 (SHL34086), Cls2 (SHI83627), and Cls3 (SHL08500) contain conserved amino acids necessary for the predicted enzymatic activity when compared to characterized Cls enzymes belonging to the PLD family (Supplementary Figures S2, S3). Hence, our search identified three different potential CDL synthases in *D. alkenivorans*: Cls1, Cls2, and Cls3 (Supplementary Table S1). Analysis of the predicted Cls sequences suggests Cls1 possesses two transmembrane domains, as predicted for the ClsA of *E. coli* (Tan et al., 2012). Cls1 is also phylogenetically most closely related to the *E. coli* ClsA sequence of *E. coli* and the archaeal Cls of *Methanospirillum hungatei* (Exterkate et al., 2021), as shown by the phylogenetic tree (Figure 11) and sequence comparisons (Supplementary Table S2). On the other hand, the closely related sequences of Cls2 and Cls3 are arranged together in a separate Cls cluster (Figure 11) and are not closely related to the ClsB and ClsC proteins of *E. coli* (Tan et al., 2012). Remarkably, Cls3 has no transmembrane domains, while Cls2 only possesses one domain in contrast to Cls1, which contains two domains, like ClsA of *E. coli* (Tan et al., 2012). pBLAST searches of the genome of *D. aliphaticivorans*, a species closely related to *D. alkenivorans*, revealed a similar set of three Cls proteins (Supplementary Table S2). We also searched for the

bifunctional CDL/PE synthase reported to occur in *Xanthomonas campestris* and related species (Moser et al., 2014) but pBLAST searches revealed a poor fit with this longer enzyme (Supplementary Table S2). Lastly, the sequence of an eukaryotic-like CDL synthase identified in *Streptomyces coelicolor* A3 (Sandoval-Calderon et al., 2009; Sco1389), which belongs to the CDP-alcohol phosphatidyltransferase superfamily, was also used in a pBLAST search. This resulted in a poor fit with a putative CDP-diacylglycerol-glycerol-3-phosphate, 3-phosphatidyltransferase protein (SHK52233; Supplementary Table S2), suggesting that this CDP synthesis pathway is likely not occurring in *D. alkenivorans*.

In an attempt to identify the enzyme responsible for the formation of the alkyl ether bond at the *sn*-2 position of phospholipids (including CDLs) of *D. alkenivorans*, a pBLAST search of its genome using the Ger enzyme (SHJ90043), previously shown to be responsible for the formation of *sn*-1 alkyl ether bonds in glycerol membrane lipids in bacteria (Sahonero-Canavesi et al., 2022), was performed and resulted in the detection of a closely related protein designated Ger2 (SHK01260; Supplementary Tables S1, S2). To test the functionality of this enzyme, we performed both aerobic and anaerobic heterologous gene-expression experiments in *E. coli* using the gene itself and a combination with the Ger protein of *D. alkenivorans* (Table 1) using the same methodology as described previously (Sahonero-Canavesi et al., 2022). In the experiments with only Ger2 and without Ger, we did not detect any glycerol ether production (Table 1). Surprisingly, however, in contrast to earlier results (Sahonero-Canavesi et al., 2022), we detected,

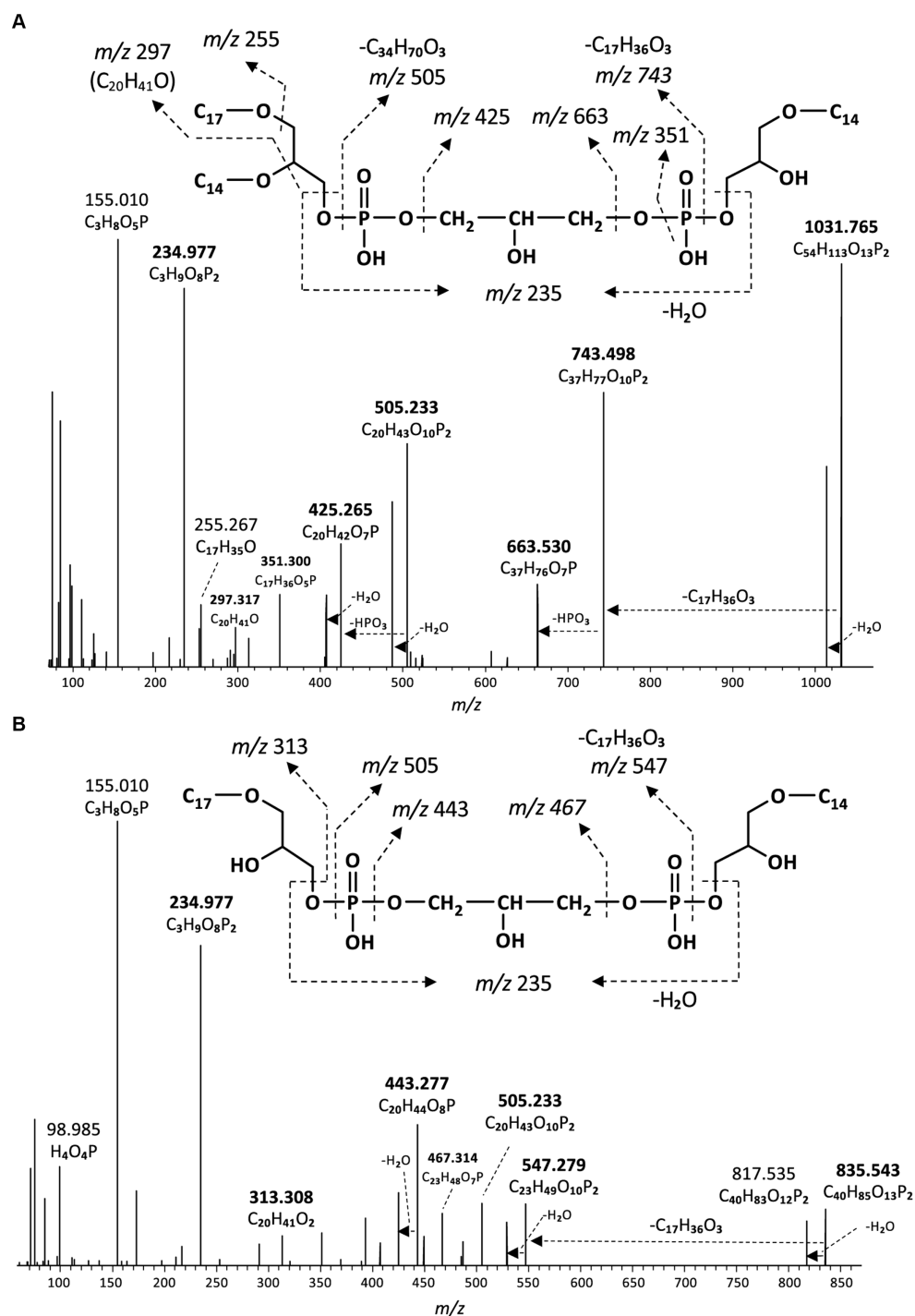
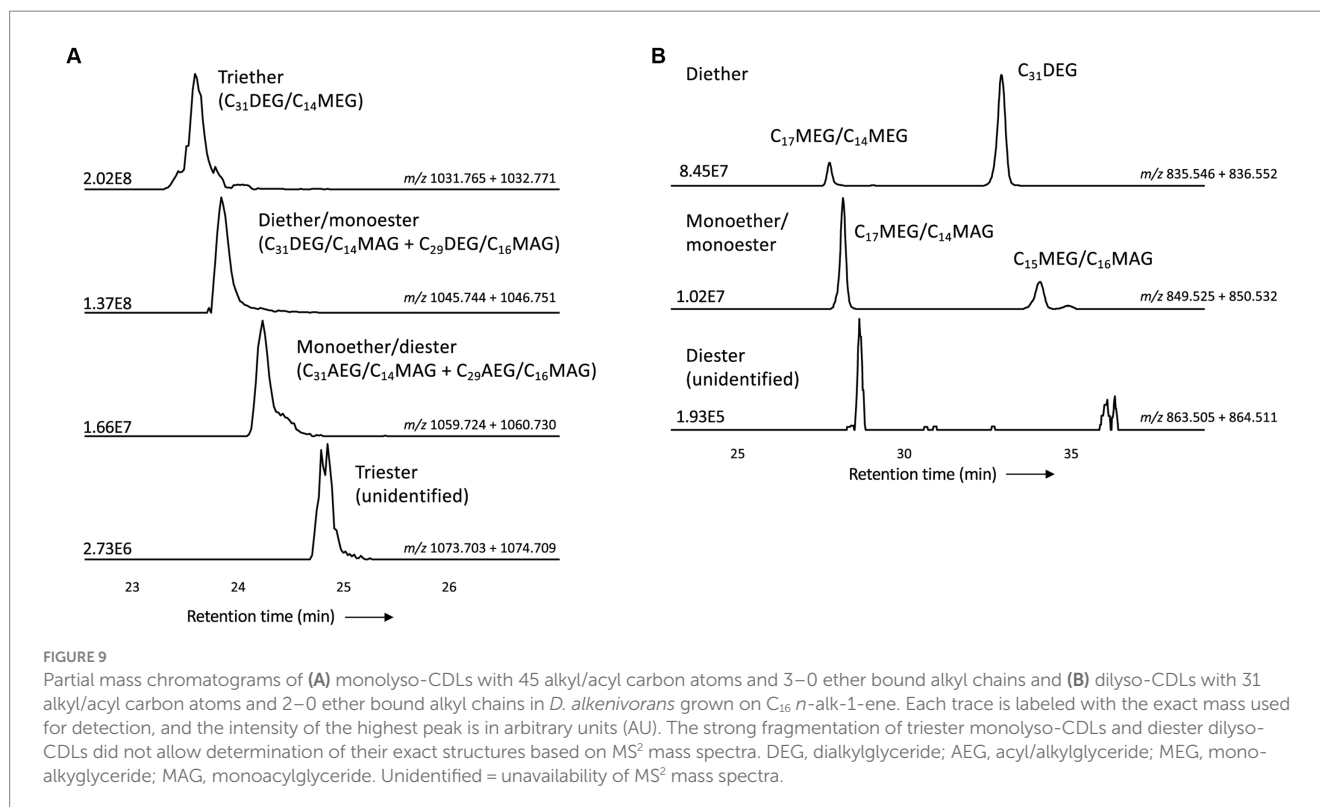


FIGURE 8

MS² mass spectra (UHPLC-ESI/HRMSⁿ) of (A) m/z 1031.8 ($[M + H]^+$) of a monolyso-cardiolipin with 45 alkyl carbon atoms and 3 ether bound alkyl chains composed of a C_{14} MEG and a C_{31} DEG containing C_{14} and C_{17} alkyl chains (Figure 9A), and (B) m/z 835.5 ($[M + H]^+$) of a dilyso-cardiolipin with 31 alkyl carbon atoms and 2 ether bound alkyl chains composed of a C_{14} MEG and a C_{17} MEG (Figure 9B). Based on the GC-MS analysis of hydrolysed core lipids, the C_{17} alkyl chains are 10-Me C_{16} carbon chains located at *sn*-1 position, and the C_{14} alkyl chain is an unbranched *n*- C_{14} .

in addition to the *sn*-1 glycerol monoethers, small amounts of three glycerol diethers ($C_{28:0}$, $C_{30:0}$, and $C_{34:1}$; Table 2) in the base-hydrolysed phospholipid extract in the experiment in which only the Ger enzyme was expressed (Table 1). This is probably because we analyzed the membrane lipids produced by UHPLC-HRMSⁿ, which has a lower detection limit. In the gene expression experiment in which Ger was

combined with Ger2, glycerol diethers were also detected (Table 2). However, their relative abundance did not increase compared to the experiment with Ger alone. Hence, our heterologous gene expression experiments suggests that only the Ger enzyme seems required for the transformation of a glycerol diester into a glycerol diether under the conditions tested here. Given the high similarity between Ger and Ger2



(Supplementary Table S2), this discrepancy is somewhat surprising. It may be due to expression issues and, therefore, we performed further experimental validation of their expression. Protein extracts from the heterologous expressed Ger and Ger2 in the *E. coli* BL21 DE3 host were separated into soluble and insoluble proteins and separated by a 7.5% SDS-PAGE (Supplementary Figure S4). The calculated size of the Ger and Ger2 proteins is 159 and 153 kDa, respectively. Notably, a band at *ca.* 150 kDa is observed for both proteins (Lanes 6 and 8), albeit in minor abundance, in contrast to the control lanes harboring empty plasmids (Lanes 5 and 7). Remarkably, both bands are not visible in the soluble fraction, confirming our prior suggestion (Sahonero-Canavesi et al., 2022) that a significant proportion of the induced protein accumulates as inclusion bodies. Nevertheless, we did not observe any major differences between Ger and Ger2 in this respect, suggesting that the accumulation of these proteins as inclusion bodies may be responsible for the relative low yields of ether derivatives and potentially for the absence of enzymatic activity of Ger2.

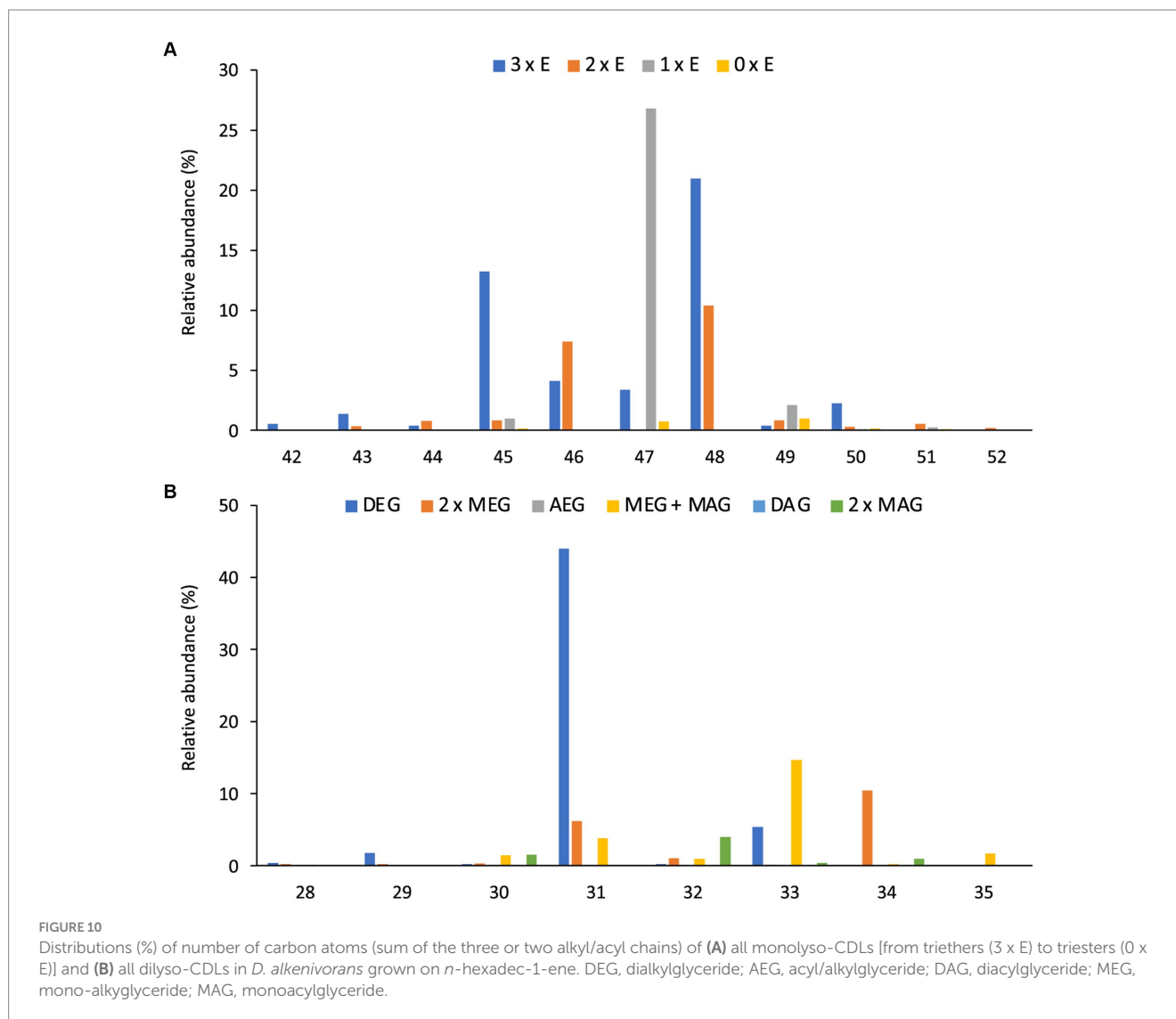
Discussion

The unusual phospholipid composition of *Desulfatibacillum alkenivorans*

The core lipid composition of the mesophilic sulfate-reducing bacterium *D. alkenivorans* strain PF2803^T analyzed by GC-MS after acid hydrolysis of cells has previously been shown to contain high proportions of dialkyl- and monoalkyl-glycerol ether core lipids (Grossi et al., 2015; Vinçon-Laugier et al., 2016), a feature previously thought to be the hallmark of (hyper)thermophilic bacteria. The present analysis by UHPLC-HRMSⁿ of the phospholipid composition

of *D. alkenivorans* confirms that alkylglycerol ether lipids are the dominant membrane lipids of this species, where they occur as dialkyl- and monoalkyl/monoacyl-glycerols with a PE or PG head group in relatively high abundance (Figures 3A,B). PE and PG phospholipids have been reported as common phospholipids in sulfate-reducing bacteria (e.g., Rütters et al., 2001; Sturt et al., 2004).

Our detailed lipidome analysis of *D. alkenivorans* further demonstrates the presence of high proportions of CDLs (*ca.* one third of total phospholipids; Figure 3A) dominated (>90%) by core lipids containing one to four ether bound alkyl chains, and essentially represented by tetraether CDLs and CDLs composed of two mixed alkyl/acyl glycerols (each representing *ca.* one third of total CDLs). Alkyl ether CDLs thus constitute the third major class of phospholipids of *D. alkenivorans* together with alkyl ether PEs and PGs, which contrasts with the general view that CDLs are minor compounds of bacterial membranes (Schlame, 2008). CDLs with alkyl vinyl ethers (so-called plasmalogens) occur quite commonly in eukaryotes (Goldfine, 2010) and bacteria (e.g., *Clostridium innocuum*; Johnston et al., 1994) but their saturated equivalents are much more seldom. Sturt et al. (2004) suggested their presence in the mesophilic and thermophilic sulfate-reducing bacteria *Desulfosarcina variabilis* and *Thermodesulfobacterium commune* but the technique applied (HPLC/electrospray ionization ion-trap MSⁿ) did not allow the structural characterization of CDLs with mixed ether- and ester-linkages. This is now possible by the application of HRMS, as demonstrated here. The present work further revealed the unprecedented occurrence of non-isoprenoid tetraether CDLs. Until now, naturally occurring tetraether CDLs have been reported in methanogens and extremely halophilic archaea (Lattanzio et al., 2002; Sprott et al., 2003; Angelini et al., 2012; Bale et al., 2019) but these contain ether-bound C₂₀ and C₂₅ isoprenoid alkyl chains.



Biosynthesis of alkyl ether CDLs

In eukaryotes and a few bacteria (Sandoval-Calderon et al., 2009) CDLs are biosynthesized by condensation of PG and cytidine diphosphate-diacylglycerol (CDP-DAG), leading to two phosphatidyl moieties linked by a central glycerol molecule. In contrast, in almost all bacteria, CDL formation proceeds via the condensation of two PG or one PG and one PE molecules (Tan et al., 2012). The enzyme required for the condensation of two PG molecules is also encoded in the genomes of some archaea (Exterkate et al., 2021). Detailed investigation of *E. coli* revealed that its genome encodes three Cls enzymes that catalyze the formation of CDLs. ClsA and ClsB catalyze the condensation of two PG molecules, while ClsC mediates the condensation of PG and PE (Tan et al., 2012). For this latter reaction, the presence of another protein, YmdB, substantially increases the production of CDLs (Tan et al., 2012).

In the *D. alkenivorans* genome, no homolog to Sco1389, encoding the “eukaryotic” biosynthetic pathway for CDL production (Sandoval-Calderon et al., 2009), was detected, so formation of CDLs through condensation of PG and CDP-DAG is unlikely. No homolog to the uncommon bifunctional CDL/PE synthase, which produces CDLs through condensation of CDP-DAG with PG for CDL synthesis (Moser

et al., 2014), was present either. However, we detected three genes encoding for potential Cls enzymes that belong to the PLD family of proteins. All three possessed the two characteristic HKD-motifs present in fully characterized Cls of most other bacteria (Supplementary Figures S2, S3). Thus, all three enzymes may be involved in the CDL biosynthetic process in this sulfate-reducing bacterium, like in *E. coli* (Tan et al., 2012). Notably, the sequence and phylogenetic position of Cls1 of *D. alkenivorans* closely resembles that of the characterized ClsA from *E. coli* (Figure 11; Supplementary Table S2) (Quigley and Tropp, 2009). At the same time, the sequence of Cls1 possesses structural and hydrophobic characteristics that are close to the recently characterized archaeal Cls from *Methanospirillum hungatei* (Exterkate et al., 2021) (Supplementary Table S2). The enzymatic characterization of the *M. hungatei* Cls revealed the promiscuity of this enzyme with respect to the phospholipid species utilized as substrate; it was shown to be non-selective toward the stereochemistry of the glycerol backbone, the nature of the lipid tail or the headgroup, and mode of bonding of the lipid tail (i.e., ester vs. ether bound) (Exterkate et al., 2021). Hence, this enzyme was able to catalyze the biosynthesis of archaeal, bacterial, and mixed archaeal/bacterial CDL species from a wide variety of substrates. The close resemblance of Cls1 of

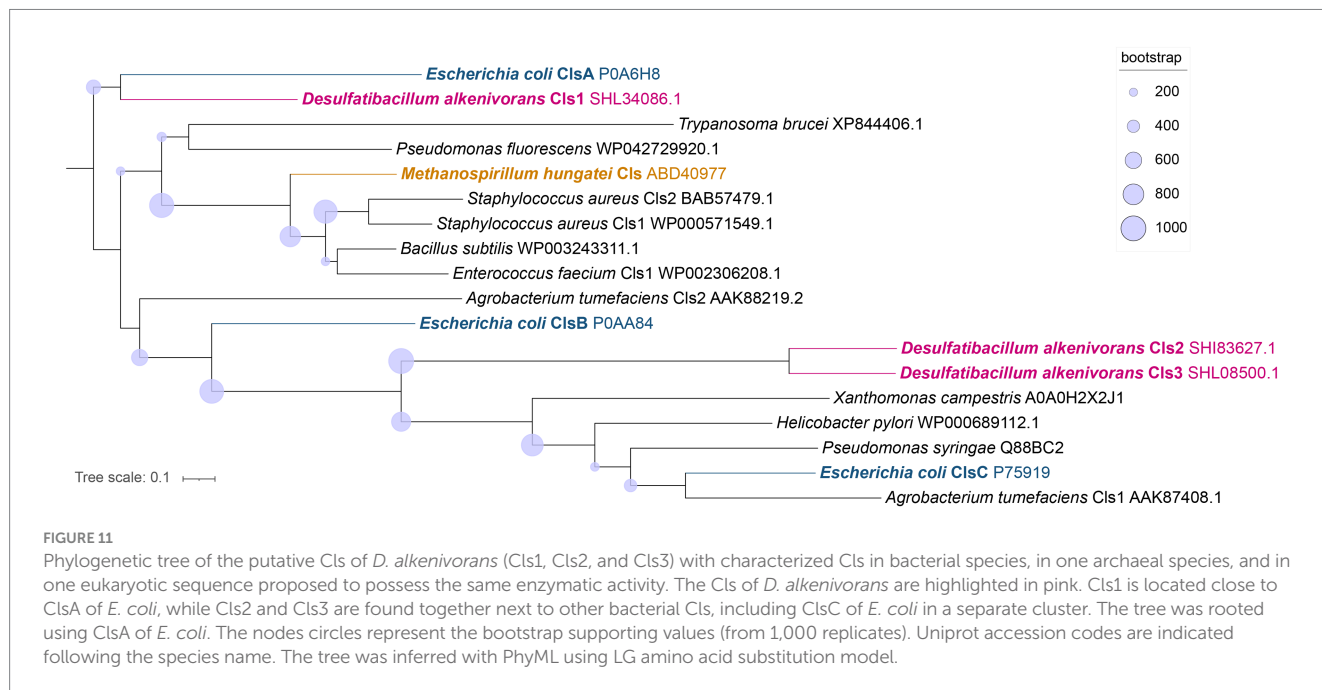


TABLE 1 Formation of mono- and dialkyl glycerol ethers after the anaerobic heterologous gene-expression of enzymes of *D. alkenivorans* potentially involved in ether bond formation in *E. coli* BL21 DE3.

Experiment	Monoethers ^a				Diethers ^b		
	C _{14:0} 1-O-MEG	C _{16:0} 1-O-MEG	CyC ₁₇ 1-O-MEG	C _{18:1} 1-O-MEG	C _{28:0} DEG	C _{30:0} DEG	C _{34:1} DEG
pET29b (negative control)	–	–	–	–	–	–	–
Ger (9SHJ90043)	+	+	+	+	+	+	+
Ger2 (SHK01260)	–	–	–	–	–	–	–
Ger + Ger2	+	+	–	–	+	+	tr

Key: + = detected; – = not detected; tr = traces; Cx:y indicates the total of non-glycerol carbon atoms (x) and the number of unsaturations or rings. ^aMonoethers were detected based on GC-MS analysis after base hydrolysis of the extract of the biomass.

^bDiethers were detected by UHPLC-HRMS^a analysis after base hydrolysis of the extract of the biomass.

TABLE 2 Mass spectral characteristics of diethers detected upon heterologous gene-expression of the Ger enzyme of *D. alkenivorans* in *E. coli* BL21 DE3.

Glycerol diether ^a	[M + NH ₄] ⁺ in MS ¹			Diagnostic fragment ions observed in MS ²			
	Observed mass	AEC ^b	Δ mmu ^c	Glycerol monoether fragment ^a	Observed mass	AEC ^b	Δ mmu ^c
C _{28:0}	502.519	C ₃₁ H ₆₈ NO ₃	0.2	C _{14:0}	289.274	C ₁₇ H ₃₇ O ₃	0.6
C _{30:0}	530.551	C ₃₃ H ₇₂ NO ₃	0.3	C _{14:0}	289.274	C ₁₇ H ₃₇ O ₃	0.6
				C _{16:0}	317.304	C ₁₉ H ₄₁ O ₃	0.8
C _{34:1}	584.598	C ₃₇ H ₇₈ NO ₃	0.4	C _{16:0}	317.305	C ₁₉ H ₄₁ O ₃	0.4

^aCx:y denotes the total number of non-glycerol carbon atoms (x) and the number of unsaturations or rings (y).

^bAssigned elemental composition.

^cDifference between the predicted mass and observed mass in milli mass units.

D. alkenivorans to ClsA of *E. coli* and Cls of *M. hungatei* (Supplementary Table S2) indicates that it is likely that Cls1 is able to utilize a wide variety of PG substrates, i.e., with a different core composition (DAG, AEG and DEG), or perhaps even in its lyso forms (MEG and MAG), as biosynthetic precursors for CDL synthesis. The role of Cls2 and Cls3 of *D. alkenivorans*, which are phylogenetically closely related, is less clear-cut. They are less closely related to any of the three Cls enzymes of *E. coli* than Cls1 (Supplementary Table S2). Phylogenetically, however, they are somewhat related to ClsC of *E. coli*

(Figure 11). The *ymdB* gene is also present in the genome of *D. alkenivorans* (Supplementary Table S1). This supports that Cls2 and/or Cls3 are catalyzing a similar reaction as ClsC in *E. coli*, i.e., condensation of a PE and a PG molecule to form CDL, since the YmdB protein enhances this reaction (Tan et al., 2012). Hence, like in *E. coli*, *D. alkenivorans* is probably capable of producing CDLs in two ways, by condensation of two PGs and by condensation of a PG and a PE. Interestingly, our analysis revealed a remarkable difference between PEs and PGs with respect to the presence of the DAG, AEG, and DEG

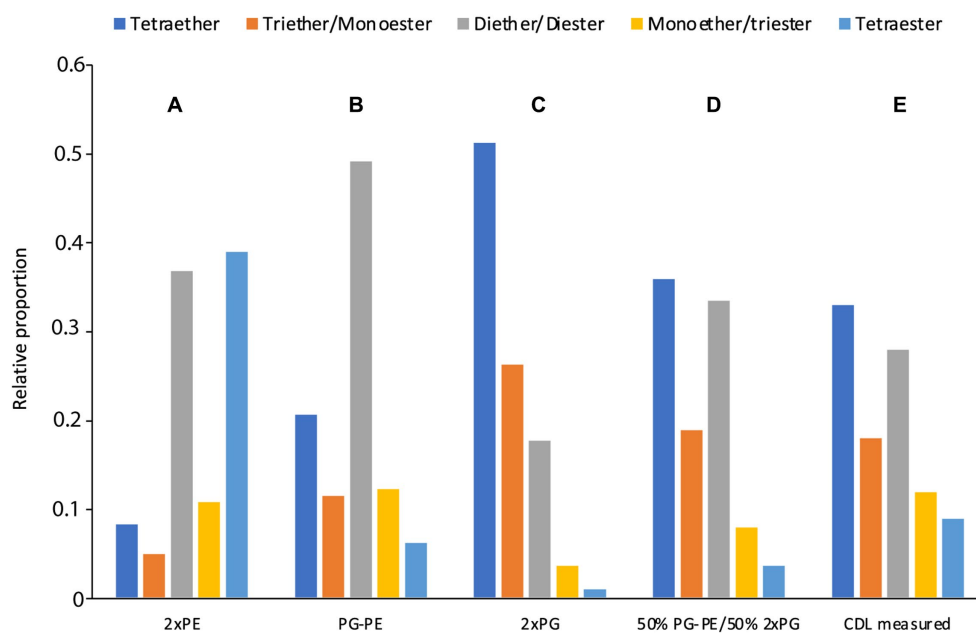


FIGURE 12

Estimated (A–D) CDL composition in comparison with the measured CDL composition (E) in *D. alkenivorans* grown on *n*-hexadec-1-ene. The estimated CDL composition was calculated from the measured PE and PG composition (Figure 3) assuming that CDL_s were formed by condensation of (A) two PEs, (B) one PE and one PG, (C) two PGs, and (D) a 50–50 combination of scenario (B,C).

core lipids; PGs contain relatively more ether bonds in their core than PEs (Figure 3B). The two pathways for the formation of CDLs would thus result in a different composition in terms of the abundance of ether bonds, which theoretically can be calculated, assuming that ester bonds in the core lipids of CDLs are not modified (i.e., reduced to ether bonds) after their biosynthesis. The results of these calculations are shown in Figure 12. The hypothetical condensation of two PE molecules would result in CDLs with a distribution dominated by tetraesters and diesters/diethers (Figure 12A), while condensation of two PG molecules, likely catalyzed by Cls1, would result in CDLs where tetraethers form ca. 50% (Figure 12C). The combination of one PE and PG, as hypothesized to be catalyzed by Cls2 and/or Cls3, would result in CDLs dominated (ca. 50%) by diesters/diethers (Figure 12B). When the measured composition of the CDLs of *D. alkenivorans* (Figure 12E) is considered, no good match with the three calculated CDL distributions (Figures 12A–C) is observed. However, when we assume that both pathways of CDL synthesis, i.e., condensation of two PG molecules and of a PG molecule and a PE molecule, operates similarly at the given growth phase, a CDL distribution is obtained (Figure 12D) that fits quite well with the actual CDL distribution (Figure 12E), i.e., with equal amounts (ca. 30%) of diesters/diethers and tetraethers. This exercise suggests that both biosynthetic pathways for production of CDLs in *D. alkenivorans* are active.

To confirm this hypothesis the role of the three Cls enzymes of *D. alkenivorans* should be tested in its own genomic context. Unfortunately, no genetic tools are currently available to inactivate these genes individually and test how this would affect the abundance and composition of the CDLs. Alternatively, if changes in the cellular content and composition of CDLs could be observed under different growth conditions (e.g., physiological state, pH, growth phase, temperature, nutrient concentration), the expression of individual *cls* genes could be detected and measured by transcriptomic or other gene-expression

analysis. This may provide a deeper understanding of these unusual ether lipids and their significance for the physiology of sulfate-reducing bacteria.

The biosynthetic link between CDLs and the two other classes of phospholipids in *D. alkenivorans* (i.e., PEs and PGs; Figure 3A) is further supported by the similar distribution of the alkyl chains present in alkyl ether CDLs, PEs and PGs, which are formed from *n*-hexadec-1-ene. Since the alkylglycerol ether lipid composition of this heterotrophic sulfate-reducing bacterium has been shown to strongly depend on growth substrate (Vinçon-Laugier et al., 2016), it is expected that variations in carbon source will directly impact the composition of biosynthesized CDLs.

Insights into alkyl ether lipid biosynthesis

The biosynthesis of *sn*-1 monoalkylglycerols (1-*O*-MEGs) has been confirmed to be catalyzed by Ger, which is a homolog of the plasmalogen biosynthetic enzyme PlsA (Sahonero-Canavesi et al., 2022). Heterologous-gene expression in *E. coli* of the *D. alkenivorans* Ger enzyme confirmed that the main lipid products were 1-*O*-MEGs with ether-bound alkyl chains derived from the fatty acids produced by *E. coli*, in line with previous investigation of the biosynthetic pathways of MEGs and DEGs in *D. alkenivorans* based on labeling experiments (Grossi et al., 2015). Lipids with an ether bond at the *sn*-2 position, i.e., *sn*-2 monoalkylglycerols (2-*O*-MEGs) and *sn*-1,2 dialkylglycerols (DEGs), are also biosynthesized by *D. alkenivorans*, although 2-*O*-MEGs occur in much smaller relative abundances (Grossi et al., 2015; Vinçon-Laugier et al., 2017). Glycerol derivatives with an ether bound alkyl group at the *sn*-2 position were not detected in previous heterologous-gene expression experiments with Ger (Sahonero-Canavesi et al., 2022). This suggested that another enzyme would be responsible for their synthesis.

Individual expression of the *D. alkenivorans* suspected gene encoding a protein catalyzing the formation of *sn*-2 ether bonds, i.e.,

Ger2, did not, however, yield *sn*-2 ether lipids; in fact, no ether lipids were produced at all (Table 1). It remains possible that the Ger2 and/or other additional enzymes are involved in ether lipid formation, but that they remained inactive due to the expression conditions of our experimental set-up or, alternatively, a required additional co-factor was absent in the expression host. Genetic manipulation or testing different expression hosts and/or conditions may provide further insight into whether Ger2 is functional as an ether lipid-forming enzyme.

Since our previous experiments on testing the enzymatic activity of various Ger proteins often resulted in the accumulation of the protein as inclusion bodies, thus producing inactive versions of the Ger enzymes (Sahonero-Canavesi et al., 2022), we also repeated the experiment with the *ger* gene. Unexpectedly, in addition to 1-O-MEGs, we were now also able to detect small relative abundances of diether lipids with alkyl chains derived from fatty acids of *E. coli* (Tables 1, 2). Hence, the biosynthesis of DEGs previously hypothesized to involve

two independent enzymes, was found to occur solely through the expression of Ger protein, as revealed by our *in vivo* gene-expression results. Further experiments will be required to understand if the conversion of ester to ether bonds indistinctively happens in all phospholipid species or if there are preferred substrates for the Ger enzyme to produce mono and diether lipids. However, we noted already a remarkable difference between PEs and PGs with respect to the presence of the DAG, AEG, and DEG core lipids, with PGs containing relatively more ether bonds in their core (Figure 3B). This likely indicates that PGs and PEs are modified themselves by the activity of Ger and not their precursor CDP-DAG (Figure 13) and that the degree of conversion of ester into ether bonds depends on phospholipid type. The much lower abundance of 2-O-MEGs in comparison to 1-O-MEGs in *D. alkenivorans* (Grossi et al., 2015; Vinçon-Laugier et al., 2017) suggests that the transformation of ester into ether bonds by the Ger enzyme starts preferentially at the *sn*-1 position and then proceeds at the *sn*-2 position (Figure 13). A comprehensive experimental validation

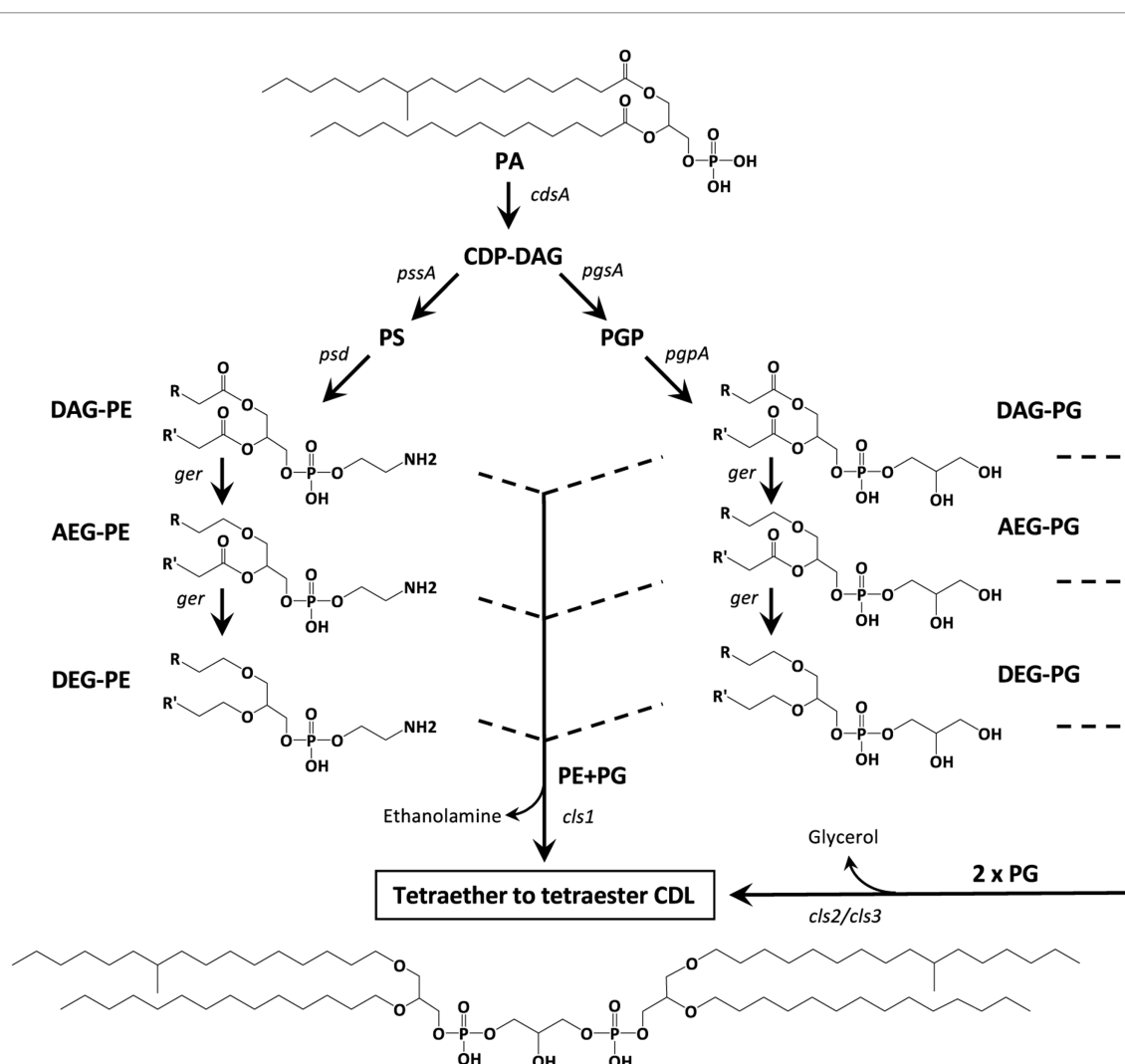


FIGURE 13

Hypothetical biosynthetic pathways for the formation of mono- to tetra-alkyl ether CDLs in *D. alkenivorans* based on the lipids and enzymes (Supplementary Table S1) detected in this work. PG and PE are synthesized by the canonical phospholipid biosynthetic pathway with CDP-DAG as the substrate. The diacyl (DAG) core of PG and/or PE can be converted into 1-alkyl, 2-acylglycerol core (AEG) and successively to 1,2-dialkylglycerol (DEG) core by a glycerol ether reductase enzyme (Ger). Cardiolipins can then be produced by a cardiolipin synthase (Cls) by two pathways involving either 2 PGs (as DAG, AEG, or DEG) or a PG and a PE (both as DAG, AEG, and DEG). The structural genes encoding the enzymes responsible for each step are indicated. Illustrated structures are examples of characteristic lipids formed by *D. alkenivorans* grown on *n*-hexadec-1-ene.

of this proposed but hypothetical pathway is required to confirm this hypothesis.

Occurrence and potential formation of lyso-phospholipids

Our UHPLC-HRMS² revealed a complex mixture of lyso-PEs, PGs and CDLs (Figures 3, 10). Lyso-lipids are typically thought to be formed by hydrolysis of one of the acyl chains, either by intrinsic phospholipases (Sahonero-Canavesi et al., 2019), or by chemical hydrolysis during the extraction. Phospholipases A/patatin-like are encoded by the genome of *D. alkenivorans* (Supplementary Table S1). Typically, lysolipids are considered to be toxic for organisms as they may impair the membrane organization, but they are also considered as a “signal” of lipid remodeling (Cao et al., 2004).

The structure of the (di)lyso phospholipids in *D. alkenivorans* reveals that they can readily be explained by the hydrolysis of the ester bonds of the various PEs, PGs, and CDLs. It is noteworthy that the relative abundance of lyso components varies markedly within these three groups of phospholipids (Figure 3): CDLs have the highest abundance (38% of “total CDLs”) and PGs the lowest abundance (9% of “total PGs”) (Figure 3). This is most probably a direct consequence of the percentage of ester/ether bonds in their structures since phospholipids can only lose their acyl groups by hydrolysis to form lyso components. PGs have only 28% ester bonds in their core lipids, which is substantially lower than for PEs (60%). CDLs have an even higher chance to lose an acyl substituent because they are composed of two core lipids.

Conclusion

The lipidome analysis by UHPLC-HRMSⁿ of the alkylglycerol-containing mesophilic sulfate-reducing bacterium *D. alkenivorans* has led to the identification of a mixture of CDLs containing one to four ether-linked alkyl chains (i.e., from monoether/triester to tetraether), further extending the structural diversity of this complex family of membrane lipids occurring widespread in all three domains of life.

The high proportion of alkyl ether CDLs associated with more conventional alkyl ether PEs and PGs, each accounting for around a third of total phospholipids in this bacterium, suggests an important role/function of these novel lipid structures in the bacterial membrane, which undoubtedly merits further investigation. The remodeling of the *D. alkenivorans* lipidome under various nutrient stresses and physico-chemical perturbations is currently under investigation.

The identification of three CDL synthases in the genome of *D. alkenivorans* resembling those previously reported in *E. coli* and theoretical calculation based on the alkyl ether composition of PEs and PGs support two modes of alkyl/acyl CDL biosynthesis, involving the condensation of two PG molecules or a PG molecule and a PE molecule, as previously proposed in many bacteria. These bacterial biosynthetic pathways, from DEGs, AEGs or DAGs with a PE or PG headgroup

to mixed ether/ester CDLs, highlight the promiscuity of prokaryotic CDL synthases.

Finally, our heterologous gene expression experiment has shown that expression of Ger protein alone may be sufficient to reduce the two ester bonds present in DAG-PEs and -PGs successively at the *sn*-1 and the *sn*-2 positions, allowing the first biosynthetic pathways to bacterial alkyl ether CDLs to be proposed. It is likely, however, that a broader set of enzymes may be involved in the production of bacterial (di)ether phospholipids, a point that certainly needs to be addressed in the future.

Data availability statement

The original contributions presented in the study are included in the article/Supplementary material, further inquiries can be directed to the corresponding author.

Author contributions

EH: Writing – original draft, Writing – review & editing, Conceptualization, Data curation, Formal analysis, Investigation, Methodology, Validation, Visualization. VG: Conceptualization, Formal analysis, Funding acquisition, Investigation, Methodology, Validation, Visualization, Writing – original draft, Writing – review & editing. DS: Formal analysis, Investigation, Methodology, Validation, Writing – review & editing. NB: Investigation, Methodology, Validation, Writing – review & editing. CC-L: Formal analysis, Investigation, Writing – review & editing. JSD: Conceptualization, Funding acquisition, Investigation, Methodology, Validation, Writing – original draft, Writing – review & editing.

Funding

The author(s) declare that financial support was received for the research, authorship, and/or publication of this article. This research was supported by funding from the European Research Council (ERC) under the European Union’s Horizon 2020 research and innovation program (grant agreement no. 694569—MICROLIPIDS to JSD), by the Soehngen Institute for Anaerobic Microbiology (SIAM) through a gravitation grant (024.002.002 to Idem) from the Dutch Ministry for Education, Culture and Science, and by the French National Research Agency (grant ANR-12-BSV7-0003 to VG; BAGEL project).

Acknowledgments

We thank I. Mitteau for help with bacterial cultures, M. Koenen for experimental assistance with lipid analysis, D. Dorhout and M. Verweij for analytical support, L. Strack van Schijndel for experimental assistance with expression experiments, and Prof. L. Villanueva for helpful discussions.

Conflict of interest

The authors declare that the research was conducted in the absence of any commercial or financial relationships that could be construed as a potential conflict of interest.

Publisher's note

All claims expressed in this article are solely those of the authors and do not necessarily represent those of their affiliated

organizations, or those of the publisher, the editors and the reviewers. Any product that may be evaluated in this article, or claim that may be made by its manufacturer, is not guaranteed or endorsed by the publisher.

Supplementary material

The Supplementary material for this article can be found online at: <https://www.frontiersin.org/articles/10.3389/fmicb.2024.1404328/full#supplementary-material>

References

- Angelini, R., Corral, P., Lopalco, P., Ventosa, A., and Corcelli, A. (2012). Novel ether lipid cardiolipins in archaeal membranes of extreme haloalkaliphiles. *Biochim. Biophys. Acta* 1818, 1365–1373. doi: 10.1016/j.bbame.2012.02.014
- Bale, N. J., Sorokin, D. Y., Hopmans, E. C., Koenen, M., Rijpstra, W. I. C., Villanueva, L., et al. (2019). New insights into the polar lipid composition of extremely halo(alkali)philic euryarchaea from hypersaline lakes. *Front. Microbiol.* 10:377. doi: 10.3389/fmicb.2019.00377
- Cao, J., Liu, Y., Lockwood, J., Burn, P., and Shi, Y. (2004). A novel cardiolipin-remodeling pathway revealed by a gene encoding an endoplasmic reticulum-associated acyl-CoA: lysocardiolipin acyltransferase (ALCAT1) in mouse. *J. Biol. Chem.* 279, 31727–31734.
- Corcelli, A. (2009). The cardiolipin analogues of Archaea. *Biochim. Biophys. Acta* 1788, 2101–2106. doi: 10.1016/j.bbame.2009.05.010
- Cravo-Laureau, C., Matheron, R., Joulain, C., Cayol, J.-L., and Hirschler-Réa, A. (2004). *Desulfatibacillum alkenivorans*, sp. nov., a novel n-alkene-degrading, sulfate-reducing bacterium, and emended description of the genus *Desulfatibacillum*. *Int. J. Syst. Evol. Microbiol.* 54, 1639–1642. doi: 10.1099/ijs.0.63104-0
- Exterkate, M., de Kok, N. A. W., Andringa, R. L. H., Wolbert, N. H. J., Minnaard, A. J., and Driessen, A. J. M. (2021). A promiscuous archaeal cardiolipin synthase enables construction of diverse natural and unnatural phospholipids. *J. Biol. Chem.* 296:100691. doi: 10.1016/j.jbc.2021.100691
- Goldfine, H. (2010). The appearance, disappearance and reappearance of plasmalogens in evolution. *Prog. Lipid Res.* 49, 493–498. doi: 10.1016/j.plipres.2010.07.003
- Goldfine, H. (2017). The anaerobic biosynthesis of plasmalogens. *FEBS Lett.* 591, 2714–2719. doi: 10.1002/1873-3468.12714
- Grossi, V., Mollex, D., Vinçon-Laugier, A., Hakil, F., Pacton, M., and Cravo-Laureau, C. (2015). Mono- and dialkyl glycerol ether lipids in anaerobic bacteria: biosynthetic insights from the mesophilic sulfate reducer *Desulfatibacillum alkenivorans* PF2803^T. *Appl. Environ. Microbiol.* 81, 3157–3168. doi: 10.1128/AEM.03794-14
- Huber, R., Rossnagel, P., Woese, C. R., Rachel, R., Langworthy, T. A., and Stetter, K. O. (1996). Formation of ammonium from nitrate during chemolithoautotrophic growth of the extremely thermophilic bacterium *Ammonifex degensii* gen. nov. sp. nov. *Syst. Appl. Microbiol.* 19, 40–49. doi: 10.1016/S0723-2020(96)80007-5
- Johnston, N. C., Goldfine, H., and Fischer, W. (1994). Novel polar lipid composition of *Clostridium innocuum* as the basis for an assessment of its taxonomic status. *Microbiology* 140, 105–111. doi: 10.1099/13500872-140-1-105
- Krogh, A., Larsson, B., Von Heijne, G., and Sonnhammer, E. L. (2001). Predicting transmembrane protein topology with a hidden Markov model: application to complete genomes. *J. Mol. Biol.* 305, 567–580. doi: 10.1006/jmbi.2000.4315
- Langworthy, T. A., Holzer, G., Zeikus, J. G., and Tornabene, T. G. (1983). Iso- and anteiso-branched glycerol diethers of the thermophilic anaerobe *Thermodesulfobacterium commune*. *Syst. Appl. Microbiol.* 4, 1–17. doi: 10.1016/S0723-2020(83)80029-0
- Lattanzio, V. M., Corcelli, A., Mascolo, G., and Oren, A. (2002). Presence of two novel cardiolipins in the halophilic archaeal community in the crystallizer brines from the salterns of Margherita di Savoia (Italy) and Eilat (Israel). *Extremophiles* 6, 437–444. doi: 10.1007/s00792-002-0279-2
- Lemoine, F., Correia, D., Lefort, V., Doppelt-Azeroual, O., Mareuil, F., Cohen-Boulakia, S., et al. (2019). NGPhylogeny. Fr: new generation phylogenetic services for non-specialists. *Nucl. Acids Res.* 47, W260–W265. doi: 10.1093/nar/gkz303
- Leticic, I., and Bork, P. (2021). Interactive tree of life (iTOL) v5: an online tool for phylogenetic tree display and annotation. *Nucl. Acids Res.* 49, W293–W296. doi: 10.1093/nar/gkab301
- Lorenzen, W., Ahrendt, T., Bozhuyuk, K. A., and Bode, H. B. (2014). A multifunctional enzyme is involved in bacterial ether lipid biosynthesis. *Nat. Chem. Biol.* 10, 425–427. doi: 10.1038/nchembio.1526
- Moser, R., Aktas, M., Fritz, C., and Narberhaus, F. (2014). Discovery of a bifunctional cardiolipin/phosphatidylethanolamine synthase in bacteria. *Mol. Microbiol.* 92, 959–972. doi: 10.1111/mmi.12603
- Oemer, G., Lackner, K., Muigg, K., Krumschnabel, G., Watschinger, K., Sailer, S., et al. (2018). Molecular structural diversity of mitochondrial cardiolipins. *Proc. Natl. Acad. Sci. USA* 115, 4158–4163. doi: 10.1073/pnas.1719407115
- Quigley, B. R., and Tropp, B. E. (2009). *E. coli* cardiolipin synthase: function of N-terminal conserved residues. *Biochim. Biophys. Acta* 1788, 2107–2113. doi: 10.1016/j.bbame.2009.03.016
- Ring, M. W., Schwär, G., Thiel, V., Dickschat, J. S., Kroppenstedt, R. M., Schulz, S., et al. (2006). Novel iso-branched ether lipids as specific markers of developmental sporulation in the myxobacterium *Myxococcus xanthus*. *J. Biol. Chem.* 281, 36691–36700. doi: 10.1074/jbc.M607616200
- Rütters, H., Sass, H., Cypionka, H., and Rullkötter, J. (2001). Monoalkylether phospholipids in the sulfate-reducing bacteria *Desulfosarcina variabilis* and *Idem. Arch. Microbiol.* 176, 435–442. doi: 10.1007/s002030100343
- Sahonero-Canavesi, D. X., López-Lara, I. M., and Geiger, O. (2019). “Membrane lipid degradation and lipid cycles in microbes” in *Aerobic utilization of hydrocarbons, oils, and lipids*. ed. F. Rojo (New York, NY: Springer), 231–254.
- Sahonero-Canavesi, D. X., Siliakus, M. F., Abdala, A. A., Koenen, M., von Meijenfeldt, F. A. B., Boeren, S., et al. (2022). Disentangling the lipid divide: identification of key enzymes for the biosynthesis of membrane-spanning and ether lipids in Bacteria. *Sci. Adv.* 8:eabq 8652. doi: 10.1126/sciadv.abq8652
- Sandoval-Calderon, M., Geiger, O., Guan, Z., Barona-Gomez, F., and Sohlenkamp, C. (2009). A eukaryote-like cardiolipin synthase is present in *Streptomyces coelicolor* and in most actinobacteria. *J. Biol. Chem.* 284, 17383–17390. doi: 10.1074/jbc.M109.006072
- Schlame, M. (2008). Cardiolipin synthesis for the assembly of bacterial and mitochondrial membranes. *J. Lipid Res.* 49, 1607–1620. doi: 10.1194/jlr.R700018-JLR200
- Sinninghe Damsté, J. S., Rijpstra, W. I. C., Hopmans, E. C., Balk, M., and Stams, A. J. (2007). Structural characterization of diabolic acid-based tetraester, tetraether and mixed ether/ester, membrane-spanning lipids of bacteria from the order *Thermotogales*. *Arch. Microbiol.* 188, 629–641. doi: 10.1007/s00203-007-0284-z
- Sinninghe Damsté, J. S., Rijpstra, W. I. C., Hopmans, E. C., Foessel, B., Wüst, P., Overmann, J., et al. (2014). Ether- and ester-bound iso-diabolic acid and other lipids in Acidobacteria of subdivision 4. *Appl. Environ. Microbiol.* 80, 5207–5218. doi: 10.1128/AEM.01066-14
- Sinninghe Damsté, J. S., Rijpstra, W. I. C., Huber, K. J., Albuquerque, L., Egas, C., and Bale, N. J. (2023). Dominance of mixed ether/ester, intact polar membrane lipids in five species of the order *Rubrobacterales*: another group of bacteria that ignores the “lipid divide”. *Syst. Appl. Microbiol.* 46:126404. doi: 10.1016/j.syapm.2023.126404
- Sprott, G. D., Larocque, S., Cadotte, N., Dicaire, C. J., McGee, M., and Brisson, J. R. (2003). Novel polar lipids of halophilic eubacterium *Planococcus* H8 and archaeon *Haloferax volcanii*. *Biochim. Biophys. Acta* 1633, 179–188. doi: 10.1016/j.bbalip.2003.08.001
- Sturt, H. F., Summons, R. E., Smith, K., Elvert, M., and Hinrichs, K. U. (2004). Intact polar membrane lipids in prokaryotes and sediments deciphered by high-performance liquid chromatography/electrospray ionization multistage mass spectrometry—new biomarkers for biogeochemistry and microbial ecology. *Rapid Commun. Mass Spectrom.* 18, 617–628. doi: 10.1002/rcm.1378
- Tan, B. K., Bogdanov, M., Zhao, J., Dowhan, W., Raetz, C. R., and Guan, Z. (2012). Discovery of a cardiolipin synthase utilizing phosphatidylethanolamine and phosphatidylglycerol as substrates. *Proc. Natl. Acad. Sci. USA* 109, 16504–16509. doi: 10.1073/pnas.1212797109
- The UniProt Consortium (2023). UniProt: The universal protein knowledgebase in 2023. *Nucl. Acids Res.* 51, D523–D531. doi: 10.1093/nar/gkac1052

Vinçon-Laugier, A., Cravo-Laureau, C., Mitteau, I., and Grossi, V. (2017). Temperature-dependent alkyl glycerol ether lipid composition of mesophilic and thermophilic sulfate-reducing bacteria. *Front. Microbiol.* 8:1532. doi: 10.3389/fmicb.2017.01532

Vinçon-Laugier, A., Grossi, V., Pacton, M., Escarguel, G., and Cravo-Laureau, C. (2016). The alkylglycerol ether lipid composition of heterotrophic sulfate reducing bacteria strongly depends on growth substrate. *Org. Geochem.* 98, 141–154. doi: 10.1016/j.orggeochem.2016.05.015

Waite, D. W., Chuvochina, M., Pelikan, C., Parks, D. H., Yilmaz, P., Wagner, M., et al. (2020). Proposal to reclassify the proteobacterial classes *Deltaproteobacteria* and *Idem*, and the phylum *Idem* into four phyla reflecting major functional capabilities. *Int. J. Syst. Evol. Microbiol.* 70, 5972–6016. doi: 10.1099/ijsem.0.004213

Yoshinaga, M. Y., Wörmer, L., Elvert, M., and Hinrichs, K. U. (2012). Novel cardiolipins from uncultured methane-metabolizing archaea. *Archaea* 2012:832097. doi: 10.1155/2012/832097